

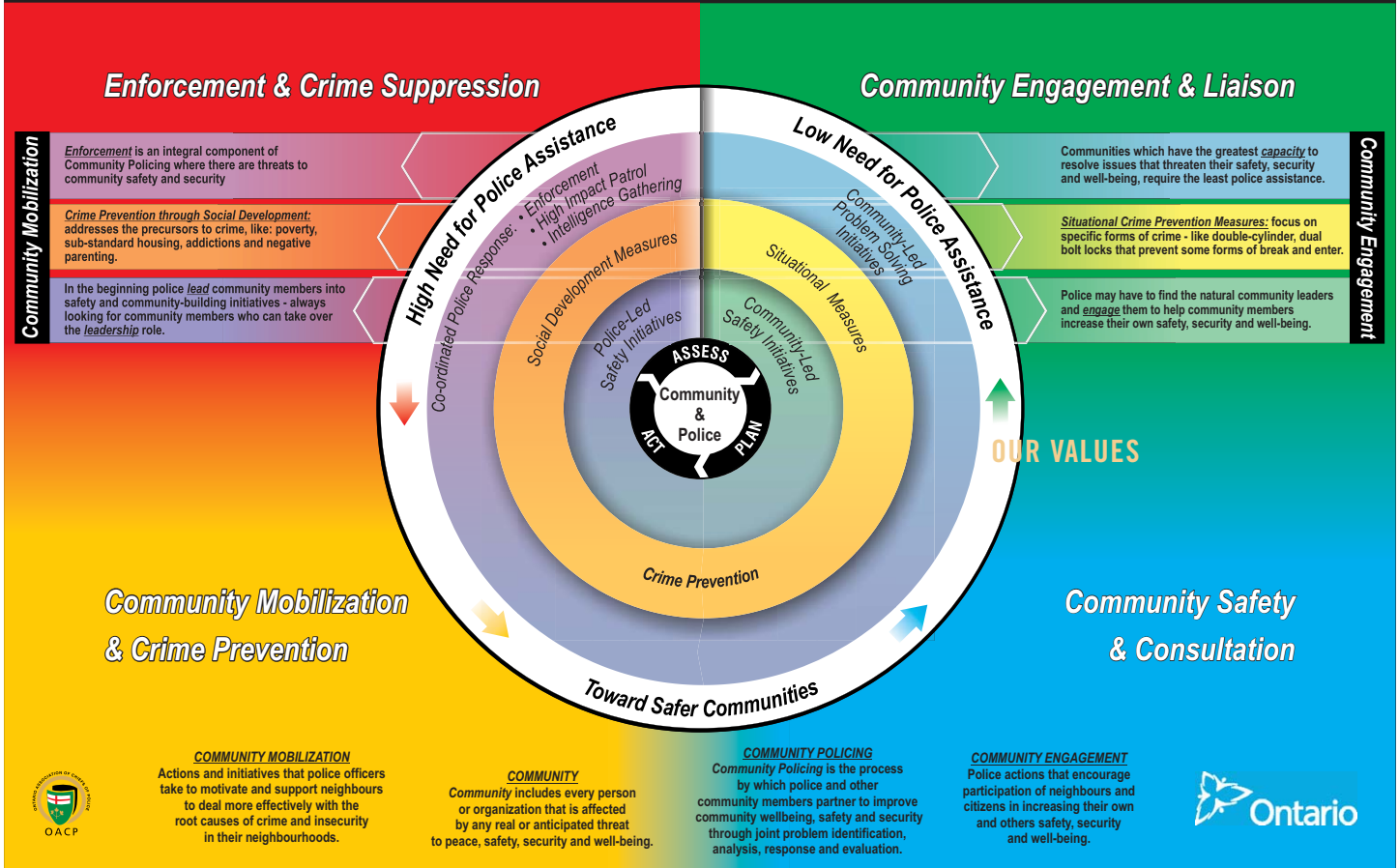


2018

PROGRESS REPORT

Lanark County
DETACHMENT

Ontario's Mobilization & Engagement Model of Community Policing



OUR VISION

Safe Communities... A Secure Ontario



OUR MISSION

Committed to public safety, delivering proactive and innovative policing in partnership with our communities.

OUR VALUES

Professionalism
Accountability

Diversity
Respect

Excellence
Leadership

LANARK COUNTY Detachment
2018 Progress Report
Table of Contents

Contents

Message from the Detachment Commander 1

Our Detachment 2

Overview 3

Crime Data 4

2018 Crime Progress Results..... 6

 Violent Crime Progress Results 6

 Property Crime Progress Results..... 8

 Illicit Drug Crime Progress Results 11

 Cyber Crime Progress Results 13

Traffic Data 15

2018 Traffic Progress Results 16

Other Policing Data 18

2018 Other Policing Progress Results 19

 Pocket Dials/False Alarms Progress Results..... 19

 Community Well Being Progress Results 20

 Other Progress Results..... 22

Endnotes 24

Message from the Detachment Commander

I am pleased to present the Lanark Detachment 2018 Action Plan Progress Report in conjunction with our 2017 – 2019 Action Plan. As we look back over the past year and even over the past three years, we recognize the many policing successes we have had:

- Improved community safety and well-being through development of effective working relationships with community partners.
- Demonstrated success identifying members of the community at an elevated level of risk and engaging appropriate community partners before the person is in crisis.
- The development and completion of the Community Plan for Safety and Well-Being and delivering it to our community partners.
- Build on the success of the Lanark County LEAD Nurse who began working at the Lanark County Detachment in August with the goal of adding a second fulltime LEAD Nurse in 2019.
- Reduced instances of property crime and false alarms through engagement with Police Services Boards and Community Policing Advisory Committees to promote education and awareness.



We continue to focus on the reduction of harm and victimization, specifically violent crime, property crime, illicit drugs and cyber crime. Once again, provincial targeted outcomes have been identified and we will work together to achieve these provincial targets into 2019.

Lanark Detachment remains committed to a traffic safety approach that will change driver behaviours responsible for injuries and deaths on roadways, waterways and trails. We are also committed to further reducing the number of false alarms which continue to misdirect law enforcement resources in OPP communities.

As we look forward, we will continue to ensure our communities have the service delivery they require. The focus of the next three years for our detachment will be:

- Support and be a champion of the Lanark County Situation Table to identify community members who are at an acutely elevated level of risk, and engage community partners prior to crisis.
- Build on the current Lanark County LEAD mental health nurse embedded within Detachment. Continue to expand partnerships with police and health care providers. Continue to explore new opportunities to reduce the criminalization of persons in mental health crises.
- Reduce violence against women and victimization of vulnerable and marginalized populations including the young and the elderly through programs such as: Interval House and Child Youth Advocacy Centre.
- Keep fatal and personal injury collisions at or below current levels through proactive traffic enforcement including R.I.D.E., Provincial and local traffic campaigns. Partnering with MTO in order to identify environmental and physical challenges on our Provincial highways.

The dedication of our members, together with the support of our municipalities, will ensure our continued success in keeping our communities safe.

Derek Needham
Detachment Commander
Lanark Detachment, OPP

Our Detachment

The eight Municipalities policed by the Lanark County Detachment are the Towns of Mississippi Mills, Perth and Carleton Place, and the Townships of Beckwith, Montague, Drummond/North Elmsley, Tay Valley and Lanark Highlands.

The Police Services Boards and Community Policing Advisory Committee of the municipalities we serve are active and engaged to ensure the best service delivery possible by the Lanark County Detachment.

We work in close partnership with many community organizations including the Smiths Falls Police Service.

Highway 7 is a major Provincial Highway that bisects the Lanark County Detachment patrol area with a significant amount of vehicular traffic flowing between Ottawa and the Greater Toronto Area (GTA).

Many inland lakes and a portion of the Rideau waterway are within the patrol boundaries and, as a result, there is a significant increase in population during the summer months created by seasonal properties.

The most recent census shows the population of Lanark County at approximately 57,000 people, excluding Smiths Falls.

The majority of residents identify English as their first language.

There is no significant commercial growth in any of the municipalities.

The main areas experiencing residential growth are Carleton Place, Mississippi Mills and Beckwith.

Overview

Detachment Personnel

Table 1.1

Civilian	Uniform
17.38	69.00

OPP Facilities

Table 1.2

Facility	Count
Detachment	1
Satellite	1

Hours (Field Personnel)

Table 1.3

	2016	2017	2018
Criminal Code	26,175.25	24,248.00	26,880.00
Other	90,959.25	90,278.00	93,966.50
Patrol	23,712.50	17,101.50	10,726.50
Traffic	11,847.25	12,613.50	15,326.00
Total	152,694.25	144,241.00	146,899.00

Criminal Code & Provincial Statute Charges Laid

Table 1.4

Offences	2016	2017	2018
Highway Traffic Act	3,265	3,145	4,441
Criminal Code Traffic	221	209	200
Criminal Code Non-Traffic	1,373	1,279	1,235
Liquor Licence Act	110	80	98
Other	404	342	347

Crime Data

Violent Crimes

Table 2.1

Offences	2016	2017	2018	Clearance Rate
01 - Homicide	3	0	0	
02 - Other Offences Causing Death	0	0	1	100.00%
03 - Attempted Murder	1	1	1	100.00%
04 - Sexual Assault	28	38	46	67.39%
05 - Assault	162	145	181	86.19%
06 - Abduction	0	3	5	100.00%
07 - Robbery	2	5	3	66.67%
08 - Other Crimes Against a Person	90	106	126	66.67%
09 - Total	286	298	363	77.13%

Property Crimes

Table 2.2

Offences	2016	2017	2018	Clearance Rate
01 - Arson	4	1	0	
02 - Break and Enter	135	135	101	24.75%
03 - Theft Over \$5,000	47	56	58	17.24%
04 - Theft Under \$5,000	409	415	384	21.09%
05 - Have Stolen Goods	11	11	12	100.00%
06 - Fraud	192	188	212	14.15%
07 - Mischief	291	302	251	19.12%
08 - Total	1,089	1,108	1,018	20.24%

Other Criminal Code

Table 2.3

Offences	2016	2017	2018	Clearance Rate
01 - Offensive Weapons	16	7	9	44.44%
02 - Other Criminal Code (Excluding traffic)	143	146	159	77.99%
03 - Total	159	155	169	75.74%

Drugs

Table 2.4

Offences	2016	2017	2018	Clearance Rate
01 - Possession	44	40	26	92.31%
02 - Trafficking	15	7	11	54.55%
03 - Importation & Production	7	3	4	50.00%
04 - Possession of Cannabis	0	0	0	
05 - Distribution of Cannabis	0	0	0	
06 - Sale of Cannabis	0	0	0	
07 - Importation / Exportation of Cannabis	0	0	0	
08 - Cultivate, Propagate or Harvest Cannabis	0	0	0	
09 - Possess, produce, sell, distribute or import anything for use in production or distribution of illicit Cannabis	0	0	0	
10 - Use of young person in the commission of a cannabis offence	0	0	0	
11 - Other Cannabis Act	0	0	0	
12 - Total	66	50	41	78.05%

Federal Statutes

Table 2.5

Offences	2016	2017	2018	Clearance Rate
01-Other Federal Statutes	9	21	18	94.44%

Intelligence-Led Policing – Crime Abatement Strategy

Table 2.6

Number of Checks	Number of Charges
30	9

2018 Crime Progress Results

Provincial Targeted Outcome: 2% reduction in overall violent crime by 2019

Provincial Targeted Outcome: 2% reduction in overall property crime by 2019

Violent Crime Progress Results

Violent Crime – Assault and Domestic Violence

Priority Description:

- There were 181 incidents of assault in 2018, and of that, roughly half were domestic-related.
- Domestic Violence continues to impact many facets of society within Lanark County. Reducing the number of incidents of Domestic Violence has been identified by several Police Services Boards/Community Policing Advisory Committees as being of significant importance to their communities.
- There was a decrease in incidents of assault from 2016 to 2017; however, in 2018, there was an increase.

Activity	Progress Status	Progress Details
Focus group meetings with survivors as part of the community safety planning process identified opportunities for increased training for police officers. A portion of the Policing Effectiveness and Modernization Grant application has been allocated to delivering additional training to officers.	Relevant Activity Underway	Utilizing funding from community partners, including the Lanark County Situation Table, Dr. Lori Haskell has twice attended and delivered training on Trauma Informed Interviewing of victims to officers of the Lanark County Detachment, Smiths Falls Police, and community partners. Continue to strengthen the relationships with Interval House and the survivors of violent crimes.
Participation in relevant education and awareness campaigns such as "See it, Name it, Change It."	Relevant Activity Underway	Detachment participation in planning meetings for "See it, Name it, Change it" hosted and co-ordinated by Lanark County Interval House. It is through these partnerships that victims are more comfortable coming forward to the police.
Continue to have a representative attend functions such as the Sex Assault/Domestic Violence Advisory Committee meetings and Interval House annual general meetings.	Relevant Activity Underway	Both the Detachment Commander and Abuse Issues Coordinator attended the Sex Assault/Domestic Violence Advisory (SADV) Committee annual general meeting. The Abuse Issues Coordinator also attends regular meetings of the SADV Committee.
Seek out relevant speakers to provide information/education/awareness to identified high-risk groups.	Relevant Activity Underway	Through the funding of the Police Effectiveness and Modernization grant, a speaker on human trafficking was brought to Lanark County. This speaker provided three different sessions to the target audiences of police officers, students and members of the general public.
Support public events such as "Take Back the Night," youth conferences and fundraising events.	Relevant Activity Underway	Members of the Lanark County Detachment, including the Detachment Commander have attended fundraising events for Lanark County Interval House such as "Violet Femmes" and "Feed the Fight" in 2017 and 2018.
Continue to investigate all Domestic Violence occurrences thoroughly and completely.	Relevant Activity Underway	All incidents of domestic violence are investigated thoroughly and completely. In addition to investigations being approved by the responsible officer's supervisor, a member of the crime unit who has a background and

Activity	Progress Status	Progress Details
		additional training in domestic violence reviews all incidents. When reviewing these incidents the Detective Constable ensures all protocol, as defined within Police Orders is followed. Any identified issues are returned to the investigating officer and their respective supervisor to correct.
Utilize crime analysis to identify intelligence-led policing focused patrol initiatives.	Relevant Activity Underway	Both local and regional analysts scrutinize statistics to identify both criminal and traffic trends. Focused patrol initiatives are largely based on 'hotspots' identified by the analysts, coupled with concerns brought in by the community.
Maintain all appropriate persons in the Crime Abatement program with confirmation of compliance of release conditions.	Relevant Activity Underway	All persons released on judicial interim release with enforceable conditions are entered into the Lanark County Crime Abatement program. This program is managed by a member of the crime unit and tasks are assigned to platoons.
Seek out opportunities to review incidents of Domestic Violence with community stakeholders, in a de-identified manner, to assist with identifying best practices and areas for improvement.	Relevant Activity Underway	East Region assembled a sex assault review committee that includes a representative from Lanark County Interview House to review a selected number of investigations. This review process is overseen by the Detective Staff Sergeant position at East Region Headquarters. Opportunities to review local incidents of Domestic Violence, not included in the scope of the sexual assault review team will also continue to be explored.
Identify and, when appropriate, make referrals for any party involved in an incident of domestic violence to the Lanark County Situation Table.	Relevant Activity Underway	From December 2015 to 2018, of the 196 discussions have been brought to the Situation Table, 79% met Acutely Elevated Risk and 85% of those had overall risk lowered. With 22 community partners participating in the Situation Table, there is representation from all agencies who provide acute care in Lanark County. Of the 196 discussions, 60% were made by Lanark County OPP. Domestic Violence is one identified risk factor considered when determining if person is at an acutely elevated level of risk.
Conduct highly visible patrols around licenced establishments near closing time to dissuade potential mutual combatants from engaging in the streets.	Relevant Activity Underway	Ongoing. Patrols are regularly conducted around the establishments licensed to sell alcohol in Lanark County, particularly around closing time. The proactive presence has a positive impact on the community by dissuading potential mutual combatants when they see the police present.

Property Crime Progress Results

Property Crime – Thefts From Motor Vehicles

Priority Description:

- Work with community partnerships to enhance community education and awareness supplemented by analytic-driven enforcement to reduce the incidents of thefts from motor vehicles.
- This is easily one of the most preventable property crimes as most thefts are from unlocked vehicles.
- There were 384 incidents of theft under \$5,000, a 9% decrease from 2017, with the overwhelming majority of those incidents being thefts from motor vehicles

Property Crime – Break and Enters

Priority Description:

- Work with community partners to enhance education and awareness supplemented by analytic-driven enforcement to reduce the incidents of break and enter.
- There was a very modest increase in break and enters, with 101 incidents reported in 2018 compared to 135 in 2017. This represents a 16% decrease. The trend for the past three years is fairly stable at approximately 123 incidents per year.

Activity	Progress Status	Progress Details
Thefts from MVs - Predictable increases in this type of offence take place once the warmer weather of the spring arrives and continues until the fall.	Relevant Activity Underway	Community Safety Officers have prepared media releases as well as spoken on local radio regarding the ease of target hardening relating to thefts from vehicles, given almost all thefts occur from unlocked vehicles. Police Services Boards and Community Police Advisory Committees (CPAC) are provided with statistics of thefts from vehicles on a quarterly basis and because they are aware of the impact as a call for service, most regularly publicize information on how to prevent these types of thefts.
Thefts from MVs - Education through internal sources, such as Community Safety Officers and external partners, such as the Police Services Boards/Community Policing Advisory Committees, is essential to continue to push the messaging for residents to remove valuable items from their vehicles and lock the doors.	Relevant Activity Underway	Community Safety Officers have prepared media releases as well as spoken on local radio regarding the ease of target hardening relating to thefts from vehicles, given almost all thefts occur from unlocked vehicles. Police Services Boards and Community Police Advisory Committees are provided with statistics of thefts from vehicles on a quarterly basis and because they are aware of the impact as a call for service, most regularly publicize information on how to prevent these types of thefts.
Thefts from MVs - Support delivery of the "Lock it or Lose it" program when appropriate.	Relevant Activity Underway	Ongoing. The Lock it or Lose It" program is primarily delivered by the Lanark County Auxiliary Unit, while supported by regular uniformed members. Initiatives under this program are specifically directed at high volume areas such as grocery store parking lots in urban areas.
Thefts from MVs - Community Drug Action Team (CDAT) members are being	Relevant Activity Underway	The Community Street Crime Unit investigates and pro-actively enforces drug and property crimes.

Activity	Progress Status	Progress Details
amalgamated into a new Street Crime Team that will include investigation and pro-active enforcement of drug and property crimes.		
Thefts from MVs - The current complement of the Street Crime Team will be increased from two members to four members.	Relevant Activity Underway	The Community Street Crime Unit continues to investigate and follow up on property crimes. There is currently three active members.
Thefts from MVs - Utilize Detachment Analysts to identify trends whereby proactive enforcement can be effectively utilized to combat this type of offence.	Relevant Activity Underway	Both Detachment and Regional analysts regularly conduct analysis of crimes and identify 'hotspots' in weekly intelligence reporting to Detachment members. Although most of these types of crimes occur in urban areas, thefts from motor vehicles has also been occurring in the more rural areas in the past 12 months. The work conducted by the analysts is particularly useful in these rural incidents to identify hotspots.
Thefts from MVs - Work collaboratively with internal and external community partners to identify persons of interest who are committing similar crimes in jurisdictions outside of Lanark County.	Relevant Activity Underway	Ongoing
Thefts from MVs - Utilize analytics to determine hotspots for this type of occurrence to assist with deploying appropriate resources to the right areas.	Relevant Activity Underway	Both Regional and Detachment analysts regularly conduct analysis of crimes and identify 'hotspots' in weekly intelligence reporting to Detachment members. Although most of these types of crimes occur in urban areas, thefts from motor vehicles has also been occurring in the more rural areas in the past 12 months. The work conducted by the analysts is particularly useful in these rural incidents to identify 'hotspots'.
Thefts from MVs - Continue to investigate all occurrences thoroughly and completely.	Relevant Activity Underway	Ongoing
B&Es - Issue targeted media releases.	Relevant Activity Underway	Community Mobilization Officers produce a weekly release of relevant calls for service including break and enters. A member of the Crime Unit is also the liaison to Crime Stoppers who produces a "Crime of the week" that is featured on local media and the Crime Stoppers website. The crime of the week is often a property theft or break and enter. When a trend is observed in a specific area, this information is relayed to the local Police Services Board or Community Policing Advisory Committee so that they can also disseminate the information to their residents.

Activity	Progress Status	Progress Details
B&Es - Conduct community presentations by Detachment Community Safety Officers to stakeholders and at-risk community groups (seniors, business owners, seasonal residence owners).	Relevant Activity Underway	Target hardening for break and enters is incorporated into the presentations on personal safety to various seniors groups by the Community Safety Officers
B&Es - Increase awareness and enhance “target-hardening” through utilization of the Safeguard program.	Relevant Activity Underway	Ongoing
B&Es - Increase awareness and enhance “target-hardening” through utilization of the Safeguard program.	Relevant Activity Underway	The Safeguard program is administered through the Lanark County Auxiliary Unit. Incidents are flagged by Detachment analysts and forwarded to the Auxiliary Unit. In addition to this reactive approach, residents and business owners can also proactively request security audits for their residences or businesses.
B&Es - Utilize OPP Community Safety Bureau resources such as “Protect Your Property.”	Relevant Activity Underway	Ongoing
B&Es - Community Drug Action Team (CDAT) members are being amalgamated into a new Street Crime Team that will include investigation and proactive enforcement of drug and property crimes, including break and enter.	Relevant Activity Underway	The Community Street Crime Unit investigates and proactively enforces drug and property crimes, including break and enters.
B&Es - The current complement of the Street Crime Team will be increased from two members to four members.	Relevant Activity Underway	The Community Street Crime Unit has three members.
B&Es - Utilize Detachment Analysts to identify trends whereby pro-active enforcement can be effectively utilized to combat this type of offence.	Relevant Activity Underway	Continue to use for Regional and Detachment analysts to identify trends whereby pro-active enforcement can be effectively utilized to combat this type of offence
B&Es - Work collaboratively with internal and external community partners to identify persons of interest who are committing similar crimes in jurisdictions outside of Lanark County.	Relevant Activity Underway	Since the inception of the Community Street Crime Unit they continue to utilize existing collaborative approaches to investigate thefts and break and enters perpetrated by suspects active in many jurisdictions.
B&Es - Utilize analytics to determine hotspots for this type of occurrence to assist with deploying appropriate resources to the right areas.	Relevant Activity Underway	Ongoing
B&Es - Continue to investigate all occurrences thoroughly and completely.	Relevant Activity Underway	Incidents of break and enter are investigated thoroughly and completely. Resources such as SOCO (Scenes of Crime Officer) and the Forensic Identification Unit are regularly utilized to obtain and utilize any forensic evidence. Analysts filter and analyze all available information and the Community Street Crime Unit assists in investigations.

Illicit Drug Crime Progress Results

Illicit Drugs (including Opioids)

Priority Description:

- Drug abuse is a major contributing factor to social disorder and many forms of criminal activity in our communities.
- 43.1% of respondents in the Satisfaction Survey indicated “yes” when asked if drugs in schools were a problem in their community.
- All Police Services Boards/Community Policing Advisory Committees have indicated action on drug use/abuse is a priority in their communities.

Activity	Progress Status	Progress Details
Collaborate with local health, education and municipal stakeholders to share information and collaborate on complex issues.	Relevant Activity Underway	Due to the increase of deaths related to opioid abuse in Ontario, Lanark County O.P.P. participates in the Community Harm Reduction Committee which is led by the Health Unit. Opioid abuse, particularly Fentanyl, has also been identified through the Lanark County Situation Table as having a potentially significant impact on community safety and well-being.
Participate in Lanark County Opioid Strategy led by the Health Unit.	Relevant Activity Underway	Our Community Mobilization Officers regularly participate in the Leeds, Lanark and Grenville Opioid Strategy Team. This team is led by the Health Unit and regularly distributes information/updates to all participating agencies.
Provide information and/or support for local education and awareness programs, and include such programs when considering available funding sources such as the Proceeds of Crime Grant.	Relevant Activity Underway	The "OPP Kids" program incorporates drug awareness education for grade 6 students. Other age relevant presentations are provided to other grades of students. Similar information/education has been provided to senior's groups as well.
Lead and support crime prevention programs within the community.	Relevant Activity Underway	Ongoing
Recognize that a significant percentage of people at acutely elevated level of risk in the community have risk factors identified as drug use/abuse and/or mental health issues. As such, when appropriate, make referrals to the Lanark County Situation Table to mitigate persons at an acutely elevated risk of harm.	Relevant Activity Underway	From December 2015 to 2018, of the 196 discussions have been brought to the Situation Table, 79% met Acutely Elevated Risk and 85% of those had overall risk lowered. With 22 community partners participating in the Situation Table, there is representation from all agencies who provide acute care in Lanark County. Of the 196 discussions, 60% were made by Lanark County OPP. Domestic violence and substance abuse are major identified risk factors of people with acutely elevated risk.
Participate in the Community Safety Plan for Lanark County process, which has identified substance	Relevant Activity Underway	The Detachment Commander has participated in the Community Safety Plan process since the beginning. The plan is complete and was developed with assistance from the Policing Effectiveness and Modernization grant.

Activity	Progress Status	Progress Details
abuse as a prevalent local risk factor needing to be addressed.		
Community Drug Action Team (CDAT) members are being amalgamated into a new Street Crime Team that will include investigation and proactive enforcement of drug and property crimes.	Relevant Activity Underway	Community Street Crime Unit continues to investigate property related crimes. The Community Street Crime Unit (CSCU) consists of 3 members. In the past 12 months, in addition to continued success combatting offences under the Controlled Drugs and Substances Act, CSCU members have also had success with some property crimes that have been difficult to investigate historically including a rash of construction site thefts over the course of 2017 and 2018.
The current complement of the Street Crime Team will be increased from two members to four members.	Relevant Activity Underway	The current complement of Community Street Crime Unit is 3 members.
Continue proactive approach to drug enforcement, particularly with the distributors.	Relevant Activity Underway	All three members of the Community Street Team have proactive drug enforcement as their primary duty. All three detectives are experienced officers with extensive community knowledge, particularly those involved in the sub-culture.
Continue to investigate all occurrences thoroughly and completely.	Relevant Activity Underway	Ongoing
Utilize Detachment Analysts to identify trends whereby proactive enforcement can be effectively utilized to combat this type of offence.	Relevant Activity Underway	Ongoing and the addition of the Regional Analyst position has added yet another layer to our ability to capture and analyze data.
Utilize analytics to determine hotspots for this type of occurrence to assist with deploying appropriate resources to the right areas.	Relevant Activity Underway	Ongoing and the addition of the Regional Analyst position added yet another layer to our ability to capture and analyze data.

Cyber Crime Progress Results

Reducing victimization from cyber and/or technology-enabled crime through engagement and education

Priority Description:

- Cyber and technology-enabled crime have developed into a concern for community members in the Lanark Detachment area.
- The most significant cyber and technology-enabled issues continue to be internet safety, cyber-bullying and internet fraud.
- Illicit activities taking place on the "dark web" are becoming more prevalent.

Activity	Status	Progress Details
Engage schools, Police Services Boards and Community Policing Advisory Committees to support and enhance existing cyber-awareness and internet safety programs and initiatives.	Relevant Activity Underway	Community Safety Officers liaise with schools to determine cyber training education and awareness needs. They play a vital role in the investigation of and various types of resolutions for a wide range of issues involving some kind of electronic device or social media platform. The Community Safety Officers have also delivered several educational sessions to students on the safe use of the internet and social media. These types of incidents are discussed at CPAC/PSB meetings and public messaging has been done by the Perth Police Services Board.
Issue targeted media releases and community presentations specific for youth, parents and the general public.	Relevant Activity Underway	Community presentations have been made to various groups, particularly seniors groups. These presentations focus primarily on fraud prevention. The OPP Kids program also provides some information and education to students about cyber safety. Media releases have been provided regarding cyber fraud at various times in the past year.
Utilize OPP Crime Prevention resources related to cyber-bullying and internet safety to assist in presentations to youth and parents.	Relevant Activity Underway	Community Safety Officers use programs supplied by OPP Crime Prevention to ensure their presentations on the safe use of the internet and social media are relevant and on point for their respective target audiences.
Seek out relevant speakers to provide information/education/awareness to identified high-risk groups.	Relevant Activity Underway	Ongoing
Conduct thorough investigations into cyber-related crimes.	Relevant Activity Underway	Ongoing
Identify and, when appropriate, make referrals to	Relevant Activity Underway	From December 2015 to 2018, of the 196 discussions have been brought to the Situation Table, 79% met Acutely

Activity	Status	Progress Details
the Lanark County Situation Table.		Elevated Risk and 85% of those had overall risk lowered. With 22 community partners participating in the Situation Table, there is representation from all agencies who provide acute care in Lanark County. Of the 196 discussions, 60% were made by Lanark County OPP. Domestic violence and substance abuse are major identified risk factors of people with acutely elevated risk.

Traffic Data

The OPP is focused on the “Big Four” factors in deaths and injuries: lack of occupant restraint, aggressive driving including speeding, impaired and distracted driving

Motor Vehicle Collisions (MVC) by Type

Table 3.1

(Includes roadway, off-road and motorized snow vehicle collisions)

Offences	2016	2017	2018
Fatal Motor Vehicle Collisions	4	4	6
Personal Injury Collisions	141	142	151
Property Damage Collisions	756	751	821
Total Motor Vehicle Collisions	901	897	978
Alcohol-related Collisions	28	30	42
Animal-related Collisions	249	290	263
Speed-related Collisions	74	77	113
Inattentive-related Collisions	155	126	121
Persons Killed	4	4	6
Persons Injured	189	192	208

Primary Causal Factors in Fatal MVCs on Roadways

Table 3.2

Offences	2016	2017	2018
Fatal Motor Vehicle Collisions where Primary Cause is Speed	1	2	1
Fatal Motor Vehicle Collisions where Primary Cause is Alcohol	1	1	1
Persons Killed where lack of seatbelt use is a Factor	1	1	0
Fatal Motor Vehicle Collisions where Primary Cause is Inattentive	0	1	0
Fatal Motor Vehicle Collisions where Animal is the Primary Cause	0	0	0

Fatalities in Detachment area

Table 3.3

	Category	2016	2017	2018
Roadway	Fatal Incidents	4	4	3
	Persons Killed	4	4	3
	Alcohol-related Incidents	1	1	1
Marine	Fatal Incidents	1	1	0
	Persons Killed	1	1	0
	Alcohol-related Incidents	0	0	0
Off-Road Vehicle	Fatal Incidents	0	0	2
	Persons Killed	0	0	2
	Alcohol-related Incidents	0	0	1
Motorized Snow Vehicle	Fatal Incidents	0	0	1
	Persons Killed	0	0	1
	Alcohol-related Incidents	0	0	1

2018 Traffic Progress Results

Provincial Targeted Outcome: 2% reduction in total motor vehicle collisions by 2019

The Big Four causal factors of fatal, personal injury and property damage collisions on roadways, waterways and trails are: impaired (alcohol/drug), speeding/ aggressive and inattentive/distracted driving and lack of occupant restraint and safety equipment

Priority Description:

- There were 6 fatal collisions, 151 personal injury collisions and 821 property damage collisions in 2018. This represents an 8.54% increase in total collisions compared to 2017.
- 263 collisions were animal related and 42 collisions were alcohol related.

Activity	Status	Progress Details
Share collision data with municipalities and Lanark County.	Relevant Activity Underway	Collision data including location, time of day and primary causal factors are shared with all municipalities through Police Services Boards and a Community Policing Advisory Committee. This data is also regularly shared with the County of Lanark as they are responsible for several highways within our patrol area.
Deliver relevant programs to local young drivers at area high schools, particularly on the topics of impaired driving (including by drug), distracted driving, occupant restraints and speeding.	Relevant Activity Underway	Community Mobilization Officers continue to present to high school students on safe driving, incorporating messaging on all of the Big 4 causal factor for collisions; speed, seatbelts, impaired driving, and distracted driving. As part of regular presentations to seniors, a component on safe driving is also generally included.
Consider Collision Prevention Through Environmental Design (CPTED) analysis when patterns and/or trends are identified.	Relevant Activity Underway	In early 2018, an analysis of fatal collisions on Highway 7 in Mississippi Mills following 2 fatalities in 10 days. Following this analysis, representatives from the Ministry of Transportation were engaged. A multi point plan including the immediate placement of signage warning motorists of blowing snow and dangerous road conditions in the affected areas. Snow barriers have also been erected by the Ministry in strategic areas in order to reduce the amount of blowing and drifting snow. The Ministry has also agreed to conduct an extensive review of this area for all aspects including placement of snow fencing to road design. Similar analyses will be conducted whenever trends are identified.

Activity	Status	Progress Details
<p>Maintain high level of enforcement on our highways with priorities on speed enforcement, distracted driving, impaired driving (including by drug) and seatbelt use.</p>	<p>Relevant Activity Underway</p>	<p>Members of the Lanark County Detachment continue to be proactively engaged on the highways we are responsible for ensuring public safety on. For the period of January-March 2018, there was a 60% increase over the same period in 2017. This represents approximately 600 more Provincial Offence Notices issued during this period in 2018 compared to 2017.</p> <p>Lanark County Detachment continues to be a leader in East Region when it comes to impaired drivers. An average of 120 impaired driving related charges are laid every year by Lanark County officers.</p>
<p>Use detachment analytics to identify areas and times in which collisions are more likely to occur.</p>	<p>Relevant Activity Underway</p>	<p>Detachment and Regional analysts conducted collision trends throughout the county. The studies included location, time of day, and primary causal factors. Areas such as Highway 7 in Mississippi Mills went well beyond by looking at wind speeds, temperatures, and possible road design concerns. The results of the five year study on Highway 7 has been incorporated into local enforcement initiatives and officer knowledge.</p>
<p>Support local, regional, and provincial initiatives.</p>	<p>Relevant Activity Underway</p>	<p>Members of the Lanark County OPP participate in and support all traffic initiatives including seatbelt, distracted driving, speed, impaired driving and commercial motor vehicle infractions.</p>

Other Policing Data

Mental Health

Table 4.1

Contact Made	No Contact Made	Empty BMHS* Forms	Complete BMHS* Forms	BMHS* Compliance
348	14	0	347	100%

*Brief Mental Health Screener (BMHS)

9-1-1 Pocket Dials

Table 4.2

Call Type	2016	2017	2018
Unknown Wireless	834	907	1,214
Officer Confirmed Pocket Dial	9	4	11
% Officer Confirmed	1%	0%	1%

2018 Other Policing Progress Results

Pocket Dials/False Alarms Progress Results

Partner to reduce the impact/risk/frequency of false alarms and 9-1-1 pocket dials

- False alarm calls are a high-risk response.
- These incidents appear under Operational 2 in billing summary which is a high-volume, low-time standard.
- It is an ineffective use of resources.
- There were 1214 “unknown wireless” 9-1-1 calls in 2018 a 33% increase from 2017.

Activity	Progress Status	Progress Details
Connect with municipalities, schools and local cell phone retailers to educate through municipal websites, social media and/or brochures.	Relevant Activity Underway	Ongoing
Utilize special events to distribute information with the use of Community Safety Officers and Auxiliary members.	Relevant Activity Underway	Community Safety Officers and Auxiliary members disseminate an assortment of information at different events such as bicycle rodeos, Detachment open houses, Perth Maplefest and Garlicfest. Included in the information is a pamphlet related to false pocket dials.
Share local analysis of 9-1-1 calls with Police Services Boards and Community Policing Advisory Committees.	Relevant Activity Underway	All 911 calls and false alarms are shared with all municipalities on a quarterly basis.

Community Well Being Progress Results

Continue collaborating for an enhanced police response to persons experiencing a mental health crisis

- Hours spent by officers visiting a hospital, and specifically an emergency room, with persons suffering from a mental health crisis detracts from other community safety initiatives.
- Effective response to mental health issues involves a broad spectrum of community service providers, including police working together in partnerships.
- Response to mental health related calls with the assistance of the LCMH nurse who is embedded at the Detachment.

Activity	Progress Status	Progress Details
Continue to participate in and champion the Lanark County Situation Table.	Relevant Activity Underway	From December 2015 to 2018, of the 196 discussions have been brought to the Situation Table, 79% met Acutely Elevated Risk and 85% of those had overall risk lowered. With 22 community partners participating in the Situation Table, there is representation from all agencies who provide acute care in Lanark County. Of the 196 discussions, 60% were made by Lanark County OPP. Mental health and substance abuse are major identified risk factors of people with acutely elevated risk.
Support the Lanark County Police and Mental Health, Emergency Department, Ambulances Service Diversion (LEAD) Program which is entering its 14th year of operation.	Relevant Activity Underway	Lanark County OPP is proud to continue to support the L.E.A.D. program which is now in it's 14th year. The Community Mobilization Officer is a co-facilitator as he has been for the past decade. The Detachment Commander presented the topic 'community mobilization' for his fourth straight year. The Lanark Detachment typically send 5-6 officers to this training every year to ensure every uniformed member has received this training.
Commit to sending additional officers to the two-day LEAD Program training in the fall of every year. This training assists officers dealing with persons suffering from mental illness, streamlines the evaluation process for persons apprehended under the Mental Health Act and connects persons in need with mental health and addictions professionals.	Relevant Activity Underway	Ongoing
Recognize that a significant percentage of people at an acutely elevated level of risk in the community have risk factors identified as substance use/abuse, and/or mental health issues. As	Relevant Activity Underway	Ongoing

Activity	Progress Status	Progress Details
such, when appropriate, make referrals to the Lanark County Situation Table to mitigate persons who are at an acutely elevated risk of harm.		
Explore and pursue best practices, such as mental health nurses being embedded with frontline officers to facilitate improved response to persons suffering from mental health issues and to connect them with appropriate resources more quickly.	Relevant Activity Underway	In August 2018, the first full time LEAD Mental Health Nurse was embedded with in Lanark County Detachment. Immediately after the implementation, there was an improved response to persons suffering from mental health and they were connected to the appropriate resources.
Participate in the Community Safety Plan for Lanark County process, which has identified substance abuse as a prevalent local risk factor needing to be addressed	Relevant Activity Underway	At the conclusion of 2018 the the Community Safety Plan for Lanark County was completed. It is presently being delivered to municipality counsels for acceptance. The plan identified substance abuse as a prevalent local risk factor that needs to be addressed.
Explore opportunities for a Child Advocacy Centre to mitigate mental health/trauma with youth by capitalizing on existing relationships and funding opportunities through grants such as the Proceeds of Crime Grant.	Relevant Activity Underway	The Child/Youth Advocacy Centre steering committee has been created and plans continue to work towards having a full time facility. Child Advocacy Centre is designed to mitigate mental health/trauma with youth by capitalizing on existing positive relationships.

Other Progress Results

Violent Crime – Elder Abuse

Priority Description:

- Many incidents of elder abuse go unreported.
- All Police Services Boards/Community Policing Advisory Committees have indicated action on elder abuse, including financial fraud, is a priority in their communities.

Activity	Progress Status	Progress Details
Education through internal sources, such as Community Safety Officers, and external partners, such as the Police Services Boards/Community Policing Advisory Committees, is essential to continue participation in relevant education and awareness campaigns.	Relevant Activity Underway	With the support of Police Services Boards, several community information sessions for seniors have been successfully delivered. These sessions have included information on seniors fraud, particularly those that originate via the internet or over the phone that are scams that deliberately target seniors. Additional information sessions are planned in 2019 by the Community Safety officers.
Seek out new working relationships with the business community to raise awareness to identify potential victims of elder abuse (including financial frauds) and refer them to police.	Relevant Activity Underway	Ongoing
Seek out relevant speakers to provide information/education/awareness to identified high-risk groups.	Relevant Activity Underway	Ongoing
Continue to investigate all occurrences thoroughly and completely.	Relevant Activity Underway	All incidents of elder abuse are investigated thoroughly and completely. In addition to investigations being approved by the responsible officer's supervisor, a member of the crime unit who has a background and additional training in elder abuse reviews all incidents. When reviewing these incidents the Detective Constable ensures all protocol, as defined within Police Orders is followed. Any identified issues are returned to the investigating officer and their respective supervisor to complete.
Maintain all appropriate persons in the Crime Abatement program with confirmation of compliance of release conditions.	Relevant Activity Underway	All persons released on judicial interim release with enforceable conditions are entered into the Lanark County Crime Abatement program. This program is managed by a member of the crime unit and tasks are assigned to platoons.
Identify and, when appropriate, make referrals for any party involved in an incident of elder	Relevant Activity Underway	From December 2015 to 2018, of the 196 discussions have been brought to the Situation Table, 79% met Acutely Elevated Risk and 85% of those had overall risk lowered.

Activity	Progress Status	Progress Details
abuse to the Lanark County Situation Table.		<p>With 22 community partners participating in the Situation Table, there is representation from all agencies who provide acute care in Lanark County. Of the 196 discussions, 60% were made by Lanark County OPP. Mental health and substance abuse are major identified risk factors of people with acutely elevated risk.</p>

Endnotes

Table 1.1 Detachment Personnel

Source: Ontario Public Service, 2018/12/31 Workforce Information Network Employee Extract, 2018/12/31

Notes: 1. Measure is Staff Strength Full-Time Equivalent (ssFTE). 2. Excludes students, seasonal, interns and all leaves of absence. 3. Data reflects employees who are "active" in WIN (includes employees using pre-retirement credits to remain on payroll leading up to official retirement, although not available operationally.)

Table 1.3 Hours (Field Personnel)

Source: Ontario Provincial Police, Daily Activity Reporting (DAR) System, Business Intelligence (BI) Cube. (2019/03/06)

Note: Based on Total hours of activity reported in DAR under selected Obligated Duty Codes (CCC, Traffic, Patrol, Total) reported to Home Location.

The % change is based on last year over previous year.

Table 1.4 Criminal Code & Provincial Statute Charges Laid

Source: Ministry of the Attorney General Integrated Court Offence Network (ICON) (2019/02/26)

Note: Charges are based on date charge added into the court system (ICON) and not date of offence.

"Other" charges is comprised of CAIA, Other Provincial & Federal Offences including drug offences.

The % change is based on last year over previous year.

Tables 2.1, 2.2, 2.3, 2.4, 2.5

Source: Records Management System (RMS Niche) All Offence Level BI Cube, (2019/02/26)

Note: Actual occurrences, Stats Can Valid occurrences only, Non-FN Coverage Types only, Primary Offence Level only, Violent & Property Crime, Other Criminal Code and Federal Statute categories aligned with public reporting standards. The % change is based on last year over previous year. For a more detailed explanation of Uniform Crime Reporting Codes see Statistics Canada, Uniform Crime Reporting at www.statcan.gc.ca

Table 2.1 Violent Crimes

Corresponding Primary Offence Levels

01* Murder 1st Degree, Murder 2nd Degree, Manslaughter, Infanticide

02 Criminal Negligence Causing Death, Other Related Offences Causing Death

03 Attempted Murder, Conspire to Commit Murder

04 Aggravated Sexual Assault, Sexual Assault with a Weapon, Sexual Assault, Other Criminal Code * Sec. 151 – Sec. 160, Sexual Interference, Invitation to Sexual Touching, Sexual Exploitation, Sexual Exploitation of a Person with a Disability, Incest, Corrupting Morals of a Child, Sexually Explicit Material to Child with Intent, Luring a Child via a Computer, Anal Intercourse, Bestiality – Commit/Compel/Incite Person, Voyeurism

05 Aggravated Assault Level 3, Assault with a Weapon, Assault Level 1, Unlawfully Causing Bodily Harm, Discharge Firearm with Intent, Using Firearm (or imitation) in commission of offence, Pointing a Firearm, Assault Peace Officer, Assault Peace Officer with a Weapon OR Cause Bodily Harm, Aggravated Assault on Peace Officer, Criminal Negligence – Bodily Harm, Trap Likely to or Cause Bodily Harm, Other Assaults / Admin Noxious thing

06 Kidnapping / Confinement, Kidnapping, Forcible Confinement, Hostage Taking, Trafficking in Persons, Abduction Under 14, Abduction Under 16, Remove Child from Canada, Abduction Contravening A Custody Order, Abduction – No Custody Order

07 Robbery, Robbery of Firearms

08 Extortion, Intimidation of a Justice System Participant or a Journalist, Intimidation of a Non-Justice Participant, Criminal Harassment, Threatening / Indecent Phone Calls, Utter Threats, Explosives, Arson – Disregard for Human Life, Other Criminal Code * against public order

*Homicide Data is extracted from Homicide Survey

Table 2.2 Property Crimes

Corresponding Primary Offence Levels

01 Arson

02 Break & Enter, Break & Enter – Firearms, Break & Enter – Steal firearm from motor vehicle

03 Theft Over, Theft Over \$5,000 – Motor Vehicle, Theft from Motor Vehicles Over \$5,000, Theft Over \$5,000 Shoplifting, Theft of Motor Vehicle

04 Theft Under \$5,000, Theft Under \$5,000 – Motor Vehicle, Theft from Motor Vehicles Under \$5,000, Theft Under \$5,000 Shoplifting

05 Possession of Stolen Goods, Trafficking in Stolen Goods over \$5,000 (incl. possession with intent to traffic), Possession of Stolen Goods over \$5,000, Trafficking in Stolen Goods under \$5,000 (incl. possession with intent to traffic), Possession of Stolen Goods under \$5,000

06 Fraud, Identity Theft, Identity Fraud

07 Mischief, Mischief to Property Over \$5,000 Exp., Mischief to Property Under \$5,000 Exp., Mischief to Religious Property Motivated by Hate, Altering / Destroying / Removing a vehicle identification number

Table 2.3 Other Criminal Code

Corresponding Primary Offence Levels

01 Offensive Weapons – Explosives, Use of Firearm in Offence, Offensive Weapons – Weapons Trafficking, Possess Firearm while prohibited, Other Criminal Code * Sec. 78 – Sec. 96, Import / Export – Firearm / Weapon / Ammunition / Device, Offensive Weapons – Point Firearm, Other Criminal Code * Sec. 105 – Sec. 108, Breach of Firearms Regulation – Unsafe Storage

02 Prostitution – Bawdy House, Live on avails of prostitution, Parent / Guardian Procure sexual activity, Prostitution under 18 – Procuring, Prostitution – Other Prostitution, Betting House, Gaming House, Other Gaming and Betting, Bail Violations, Counterfeit Money, Disturb the Peace, Escape Custody, Indecent Acts, Child Pornography, Voyeurism, Public Morals, Lure Child via Computer, Obstruct Public Peace Officer, Prisoner Unlawfully at Large, Trespass at Night, Fail to Attend Court, Breach of Probation, Threatening / Harassing Phone Calls, Utter Threats to Property / Animals, Advocating Genocide, Public Incitement of Hatred, Unauthorized record for sale, rental, comm. Distribution, Other Criminal Code * Sec. 46 – Sec. 78.1, Property or Services for Terrorist Activities, Terrorism – Property, Participate in Activity of Terrorist Group, Facilitate Terrorist Activity, Instruct Terrorist Act, Harbour or conceal a Terrorist, Hoax Terrorism, Offensive Weapons – Careless use of firearms, Bribery / Perjury, Other Criminal Code * Sec. 176 – Sec. 182, Interception / Disclosure of Communication, Other Criminal Code * Sec. 215 – Sec. 319, Other Criminal Code * Sec. 337 – Sec. 352, Other Criminal Code * Sec. 415 – Sec. 427, Intimidation of Justice System Participant, Other Criminal Code * Sec. 437 – Sec. 447, Offences Related to Currency, Proceeds of Crime, Attempts, Conspiracies, Accessories, Instruct Offence for Criminal Organization, Commission of offence for Criminal Organization, Participate in Activities of Criminal Organization, Other Criminal Code * Sec. 462 – Sec. 753

Table 2.4 Drugs

Corresponding Primary Offence Levels

01 Possession–Heroin, Possession–Cocaine, Possession–Other Controlled Drugs and Substances Act (CDSA), Possession–Cannabis, Possession–Methamphetamine (Crystal Meth), Possession–Methylenedioxyamphetamine (Ecstasy)
02 Trafficking–Heroin, Trafficking–Cocaine, Trafficking–Other CDSA, Trafficking–Cannabis, Trafficking–Methamphetamine (Crystal Meth), Trafficking–Methylenedioxyamphetamine (Ecstasy)
03 Import/Export–Heroin, Import/Export–Cocaine, Import/Export–Other Drugs, CDSA *Sec.6 Import/Export

Table 2.5 Federal Statutes

Corresponding Primary Offence Levels

01 Other Federal Statutes, Bankruptcy Act, Income Tax Act, Canada Shipping Act, Canada Health Act, Customs Act, Competition Act, Excise Act, Youth Criminal Justice Act (YCJA), Immigration and Refugee Protection Act, Human Trafficking (involving the use of abduction, fraud, deception or use of threat), Human Smuggling fewer than 10 persons, Human Smuggling 10 persons or more, Firearms Act, National Defence Act, Other Federal Statutes

Table 2.6 Intelligence-Led Policing – Crime Abatement Strategy

Source: Records Management System (RMS Niche) Extract Report, (2019/02/26)

Information is derived from the ILP-CAS Persons Search Report RMS Niche.

Table 3.1 Motor Vehicle Collisions (MVC) by Type

(Includes roadway, off-road and motorized snow vehicle collisions)

Source: Ontario Provincial Police, Collision Reporting System (CRS), (2019/02/26)

Note: Count of Reportable Fatal, PI and PD Collisions entered into the eCRS for MVC, MSV and ORV Report Types regardless of status, excluding FN detachments. Count of Alcohol-related collisions where Alcohol-Involved indicated as Yes in eCRS.

The % change is based on last year over previous year.

Table 3.2 Primary Causal Factors in Fatal MVCs on Roadways

Source: Ontario Provincial Police Collision Reporting System (CRS), (2019/02/26)

Note: Count of Reportable Fatal Collisions entered into the eCRS where Report Types is MVC only regardless of status, excluding FN detachments. Total Fatal Collisions includes collisions where causal factors are not listed in this table. Count of Speed-related collisions where contributing factor speed or speed too fast for conditions OR driver action exceeding speed limit or speed too fast for conditions. Count of Alcohol-related collisions where Alcohol-Involved indicated as Yes in eCRS. Count of collisions where victim type is deceased and safety equipment use is equipment not used but available or no equipment available. Count of collisions where distracted drivers is based on contributing factor of inattentive driver or driver condition reported as inattentive. Count of collisions where wildlife a factor is contributing factor reported as animal - wild or domestic.

The % change is based on last year over previous year.

* Seatbelt includes: Use unknown, lap and shoulder belt, lap belt only, lap belt only of combined assembly, child safety seat used incorrectly, child safety seat used correctly, other passive restraint device.

Table 3.3 Fatalities in Detachment Area

Source: Ontario Provincial Police, Collision Reporting System (CRS), (2019/02/26)

Note: Count of Fatal incidents and persons killed entered into the eCRS where Collision Type is reported as Fatal by report type (MVC, Marine, MSV, ORV). Alcohol-related is a count of the incidents where Alcohol-Involved on the Details Screen reported as Yes. First Nation Detachments were excluded from this count. Motorized Snow Vehicles Statistics are reported seasonally from October 1st to March 31st each reporting period. The % change is based on last year over previous year.

Table 4.1 911 Pocket Dials

Source: Computer Aided Dispatch (CAD) System, (2019/01/19)

Note: CAD data and will not mirror any other data sources on how 911 calls/911 hang ups are reported. 911 Officer Confirmed Pocket Dial data represents CAD occurrences entered by PCC Communicators for calls received with no-voice contact from cellular devices only. Where an officer confirms that a 911 Wireless call was indeed a 911 Pocket Dial the event types be changed and may not mirror other data sources (e.g. Niche) that reference 911 calls. This represents only a small percentage of all 911 calls handled and dispatched by the OPP.

Table 4.2 2018 Mental Health Strategy Data

Source: Records Management System (RMS Niche), (2018/12/31)

Note: Occurrences between 2018/01/01 00:00 and 2018/12/31 23:59

* Occurrences with MH UCR Code 8529

OPP PROGRAMS AND SERVICES



2018

PROGRESS REPORT

Proactive and Reactive Policing/Investigation

Aboriginal Policing

Alcohol and Gaming Enforcement

Asset Forfeiture

Auxiliary Policing/Chaplaincy

Aviation/Flight Operations

Breath Analysis/Drug Recognition

Canine

Chemical, Biological, Radiological, Nuclear and Explosive Response

Child Exploitation Investigation

Civil and Human Rights Claim investigation

Collision Reconstruction and Investigation

Commercial Vehicles and Dangerous Goods

Communications

Community Policing

Complaint Investigation

Contraband Tobacco Enforcement

Court Case Management

Crime Analysis

Crime Prevention and Community Safety

Crime Stoppers

Criminal Investigation Services and Major Case Management

Crisis Negotiations

Drug Enforcement

Drug Evaluation and Classification

Emergency Management

Emergency Response

Explosives Disposal

Forensic and Identification Services

Hate Crimes/Extremism Investigation

Illegal Gaming Investigation

Incident Command

Intelligence

Marine/Motorized-Snow and Off-Road Vehicle and Motorcycle Patrol

Media Relations

Offender Transportation

Ontario Sex Offender Registry

Organized Crime Investigation

Polygraph

Protective Services

Provincial Anti-Terrorism

Provincial Operations Centre

Public Order

Repeat Offender Parole Enforcement

RIDE (Reduce Impaired Driving Everywhere)

Search and Rescue

Surveillance - Electronic and Physical

Tactical Emergency Medical

Tactics and Rescue

Technological Crime/Digital Evidence Forensics and Analysis

Threat Assessment and Criminal Behavioural Analysis

Traffic Safety

Training

Underwater Search and Recovery

United Nations Policing Missions

Unmanned Aerial Systems

Urban Search and Rescue

Violent Crime Linkage Analysis

Victim Assistance

Victim Identification and Rescue

Weapons Enforcement

Witness Protection

The above list corresponds with the Adequacy and Effectiveness of Police Services Regulation (Adequacy Standards, O. Reg. 3/99). The list further provides an overview of various OPP programs and services but should not be considered complete.



Lanark County
DETACHMENT

75 Dufferin Street, PO Box 160
Perth, Ontario
K7H 3E3

Tel: (613) 267-2626
Fax: (613) 267-8868
www.opp.ca



2018

**PROGRESS
REPORT**