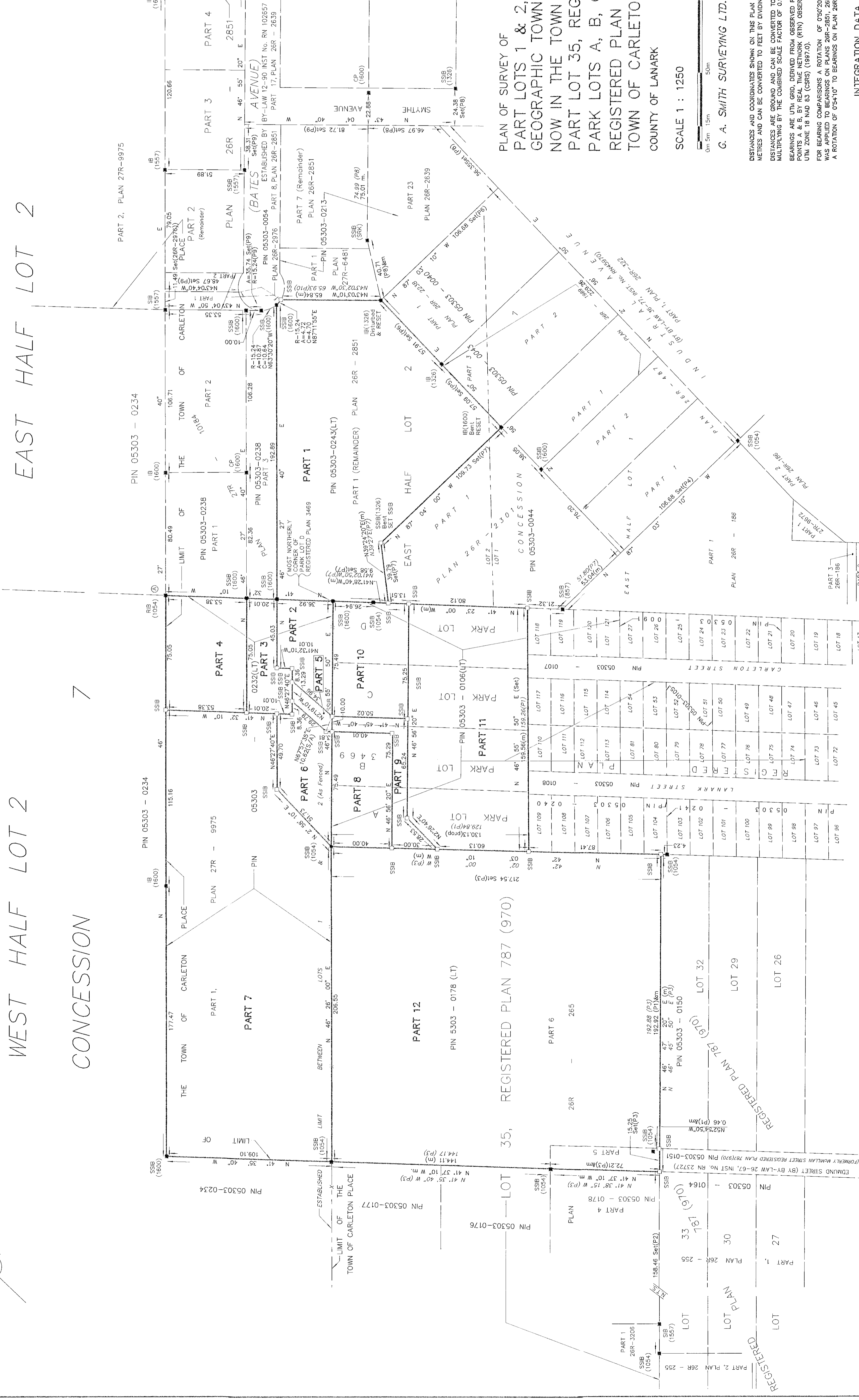


PART	LOT	CONCESSION/REGISTERED PLAN	PIN
1	PART LOTS 1 & 2	CONCESSION 7	ALL OF PIN 05303-0243 (LT)
2	PART LOT 2	CONCESSION 7	PART OF PIN 05303-0234 (LT)
3			PART OF PIN 05303-0238 (LT)
4			PART OF PIN 05303-0238 (LT)
5			PART OF PIN 05303-0238 (LT)
6			PART OF PIN 05303-0238 (LT)
7	PART PARK LOTS A & B	PLAN 3469	PART OF PIN 05303-0238 (LT)
8	PART PARK LOTS A, B & C	PLAN 3469	PART OF PIN 05303-0238 (LT)
9	PART PARK LOTS A, B, C & D	PLAN 3469	PART OF PIN 05303-0238 (LT)
10			PART OF PIN 05303-0238 (LT)
11			PART OF PIN 05303-0238 (LT)
12	PART LOT 35	REGISTERED PLAN 787(970)	PART OF PIN 05303-0178 (LT)

PARTS 2-7 (BOTH INCLUSIVE) COMPRISE ALL OF PIN 05303-0234(LT)



WEST HALF LOT 2
EAST HALF LOT 2

CONCESSION

7

PLAN 27R-10314
RECEIVED AND DEPOSITED
DATE Dec 13/13
11/15/14
REPRESENTATIVE FOR
LAND REGISTRAR FOR
THE LAND TITLES DIVISION
OF LANARK (27)

I REQUIRE THIS PLAN TO BE
DEPOSITED UNDER THE LAND
TITLES ACT.

DATED NOV. 28, 2013
G. A. SMITH
ONTARIO LAND SURVEYOR

SURVEYOR'S CERTIFICATE
I CERTIFY THAT:
1. THIS SURVEY AND PLAN ARE CORRECT AND
IN ACCORDANCE WITH THE SURVEYS ACT,
THE REGULATIONS MADE UNDER THEM,
AND THE REGULATIONS MADE UNDER THEM.
2. THE SURVEY WAS COMPLETED ON AUG. 22, 2013

DATE NOV. 28, 2013
G. A. SMITH
ONTARIO LAND SURVEYOR

PLAN OF SURVEY OF
PART LOTS 1 & 2, CONCESSION 7
GEOGRAPHIC TOWNSHIP OF RAMSAY
NOW IN THE TOWN OF CARLETON PLACE
PART LOT 35, REGISTERED PLAN 787 (970)
PARK LOTS A, B, C, D,
REGISTERED PLAN 3469
TOWN OF CARLETON PLACE
COUNTY OF LANARK

SCALE 1 : 1250
0m 5m 10m 50m 100m 125metres
G. A. SMITH SURVEYING LTD.

DISTANCES AND COORDINATES SHOWN ON THIS PLAN ARE IN
METRES AND CAN BE CONVERTED TO FEET BY DIVIDING BY 0.3048.
DISTANCES ARE GROUND AND CAN BE CONVERTED TO GRID BY
MULTIPLYING BY THE COMBINED SCALE FACTOR OF 0.999663.
BEARINGS ARE UTM GRID, DERIVED FROM OBSERVED REFERENCE
POINTS A & B, BY REAL TIME NETWORK (RTN) OBSERVATIONS,
UTM ZONE 18 NAD 83 (SSRS) (1997.0).
FOR BEARING COMPARISONS A ROTATION OF 0°50'20" CLOCKWISE
WAS APPLIED TO BEARINGS ON PLANS 26R-2851, 26R-2976 AND
A ROTATION OF 0°54'10" TO BEARINGS ON PLAN 26R-285.

INTEGRATION DATA
OBSERVED BEARING OBSERVATIONS ARE DERIVED FROM THE NETWORK
OBSERVATIONS (RTN) AND ARE REFERRED TO UTM ZONE 18 NAD 83 (SSRS) (1997.0)
COORDINATES COMPLY WITH URBAN ACCURACY
PER SECTION 14 (2) OF O. REG. 216/10

POINT ID	NORTHING	EASTING
ORP A	5000445.77	405460.57
ORP B	5000720.12	405749.59

COORDINATES CANNOT, IN THEMSELVES, BE USED TO
RE-ESTABLISH CORNERS OR BOUNDARIES SHOWN ON THIS PLAN

- LEGEND & NOTES
- MONUMENT FOUND
 - IRON BAR
 - STANDARD IRON BAR
 - SHORT STANDARD IRON BAR
 - ROUND IRON BAR
 - CONCRETE PIN
 - ORIGIN UNKNOWN
 - SPLIT ANGLE
 - FAR-HALL, MOFFATT, WOODLAND LIMITED
 - GEO.W. BRACKEN, O.L.S.
 - SURY, ROWE AND KASPRZAK LIMITED
 - G.A. SMITH, O.L.S.
 - PLAN 26R-255
 - PLAN 26R-265
 - PLAN 26R-266
 - PLAN 26R-267
 - PLAN 26R-268
 - PLAN 26R-269
 - PLAN 26R-270
 - PLAN 26R-271
 - PLAN 26R-272
 - PLAN 26R-273
 - PLAN 26R-274
 - PLAN 26R-275
 - PLAN 26R-276
 - PLAN 26R-277
 - PLAN 26R-278
 - PLAN 26R-279
 - PLAN 26R-280
 - PLAN 26R-281
 - PLAN 26R-282
 - PLAN 26R-283
 - PLAN 26R-284
 - PLAN 26R-285
 - PLAN 26R-286
 - PLAN 26R-287
 - PLAN 26R-288
 - PLAN 26R-289
 - PLAN 26R-290
 - PLAN 26R-291
 - PLAN 26R-292
 - PLAN 26R-293
 - PLAN 26R-294
 - PLAN 26R-295
 - PLAN 26R-296
 - PLAN 26R-297
 - PLAN 26R-298
 - PLAN 26R-299
 - PLAN 26R-300

SSIS HAVE BEEN SET DUE TO
INSUFFICIENT OVERBURDEN

G.A. SMITH SURVEYING LTD.
ONTARIO LAND SURVEYOR
CARLETON PLACE, ONTARIO
(613) 253 - 6000 Fax (613) 253 - 6001

DRAWN : R. W. CHECKED : G.A.S.
REFERENCE No. : 13-1075-1P-LAN