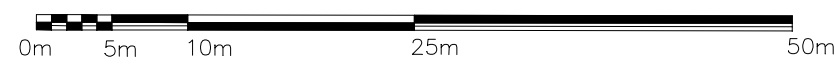


PLAN OF SURVEY OF
PART LOTS 13, 18 & 21
REGISTERED PLAN 787(970)
TOWN OF CARLETON PLACE

COUNTY OF LANARK

SCALE 1 : 500



G. A. SMITH SURVEYING LTD.
ONTARIO LAND SURVEYOR

DISTANCES AND COORDINATES SHOWN ON THIS PLAN ARE IN METRES AND CAN BE CONVERTED TO FEET BY DIVIDING BY 0.3048.

DISTANCES ARE GROUND AND CAN BE CONVERTED TO GRID BY MULTIPLYING BY THE COMBINED SCALE FACTOR OF 0.99966.

BEARINGS ARE UTM GRID, DERIVED FROM OBSERVED REFERENCE POINTS A & B, BY REAL TIME NETWORK (RTN) OBSERVATIONS, UTM ZONE 18 NAD 83 (CSRS) (1997.0).

FOR BEARING COMPARISONS, A ROTATION OF 0°52'10" CLOCKWISE, WAS APPLIED TO BEARINGS ON PLANS 26R-255, 26R-266 AND 26R-782.

SCHEDULE			
PART	PART OF LOTS	REGISTERED PLAN	PIN
1			PART OF 05303-0155(LT)
2	13	787(970)	PART OF 05303-0155(LT)
3			PART OF 05303-0155(LT)
4	13, 18 & 21		PART OF 05303-0155(LT)
5	21		PART OF 05303-0155(LT)
6	18, 21		PART OF 05303-0155(LT)
7	13, 18 & 21		PART OF 05303-0155(LT)

PARTS 1-7 COMPRISE PART OF PIN 05303-0155(LT)

INTEGRATION DATA

OBSERVED REFERENCE POINTS (ORP'S) DERIVED FROM REAL TIME NETWORK OBSERVATIONS (RTN) AND ARE REFERRED TO UTM ZONE 18 NAD 83(CSRS)(1997.0) COORDINATES COMPLY WITH URBAN ACCURACY PER SEC.14 (2) OF O. REG. 216/10		
POINT ID	NORTHING	EASTING
ORP A	4999709.68	409622.90
ORP B	4999853.64	409494.91

COORDINATES CANNOT, IN THEMSELVES, BE USED TO RE-ESTABLISH CORNERS OR BOUNDARIES SHOWN ON THIS PLAN

PLAN 27R-
RECEIVED AND DEPOSITED

DATE

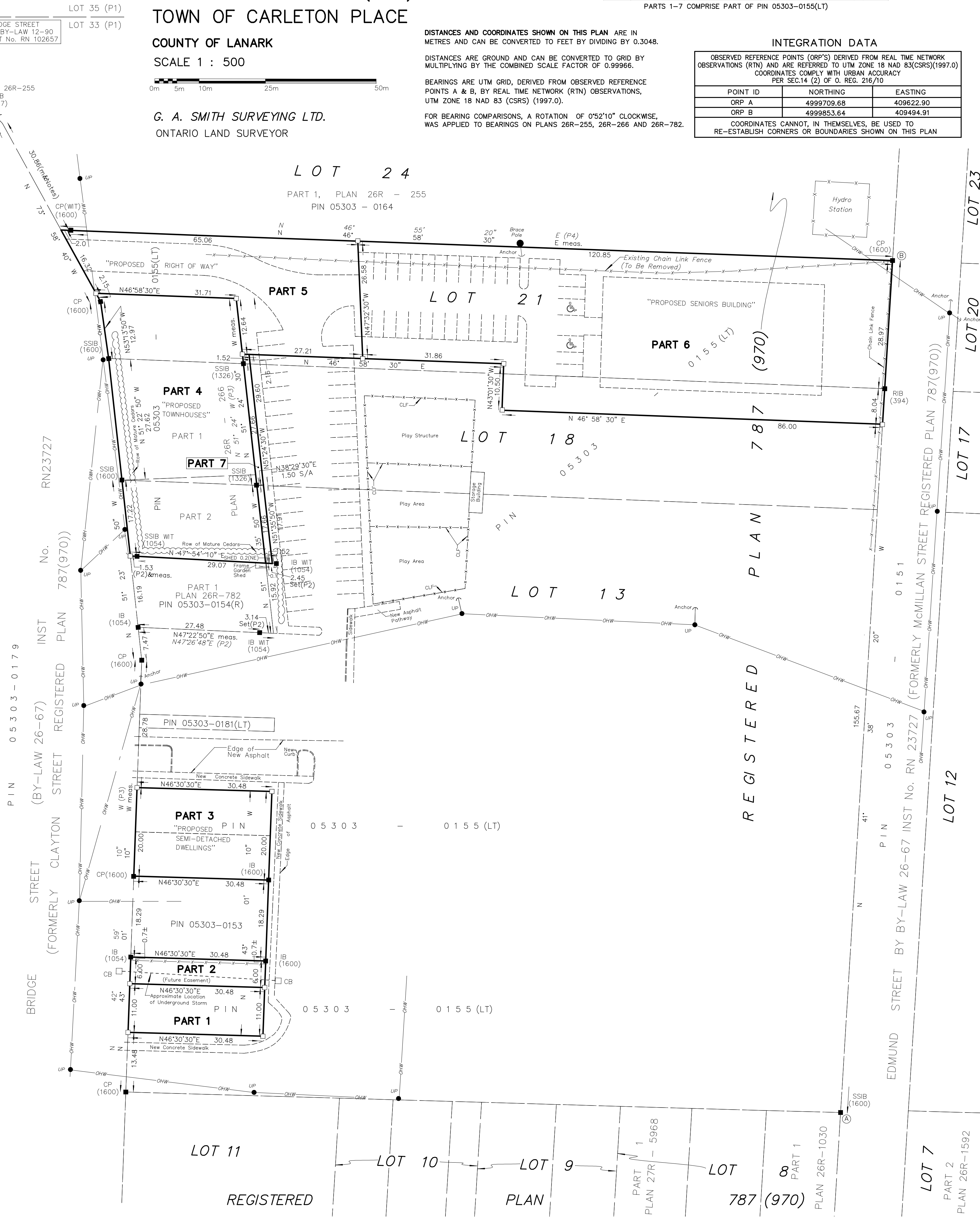
DRAFT

REPRESENTATIVE FOR
LAND REGISTRAR FOR
THE LAND TITLES DIVISION
OF LANARK (27)

I REQUIRE THIS PLAN TO BE
DEPOSITED UNDER THE LAND
TITLES ACT.

DATED

G. A. SMITH
ONTARIO LAND SURVEYOR



SURVEYOR'S CERTIFICATE

I CERTIFY THAT :
1. THIS SURVEY AND PLAN ARE CORRECT AND IN ACCORDANCE WITH THE SURVEYS ACT, THE SURVEYORS ACT, THE LAND TITLES ACT AND THE REGULATIONS MADE UNDER THEM.

2. THE SURVEY WAS COMPLETED ON

DATE

DRAFT

G. A. SMITH
ONTARIO LAND SURVEYOR

LEGEND & NOTES

- - MONUMENT FOUND
- - MONUMENT SET
- IB - IRON BAR
- SIB - STANDARD IRON BAR
- SSIB - SHORT STANDARD IRON BAR
- RIB - ROUND IRON BAR
- CP - CONCRETE PIN
- (WIT) - WITNESS
- (OU) - ORIGIN UNKNOWN
- UP - UTILITY POLE
- OHW- - OVERHEAD WIRES
- CB - CATCH BASIN
- TG - TOP GRATE
- MH - MAN HOLE
- 394 - S.E. FARLEY, O.L.S.
- 1054 - G.E. W. BRACKEN, O.L.S.
- 1326 - W. ROSS TAGGART, O.L.S.
- 1600 - G.A. SMITH, O.L.S.
- AOC - ANNIS, O'SULLIVAN, VOLLEBEKK LTD.
- P1 - REGISTERED PLAN No. 787
- P2 - PLAN 26R-782
- P3 - PLAN 26R-266
- P4 - PLAN 26R-255

G.A. SMITH SURVEYING LTD.
ONTARIO LAND SURVEYOR
CARLETON PLACE, ONTARIO
(613) 253 - 6000 Fax (613) 253 - 6001

DRAWN : R. W. CHECKED : G.A.S.
REFERENCE No. : 13-4170
REVISED MARCH 4, 2015