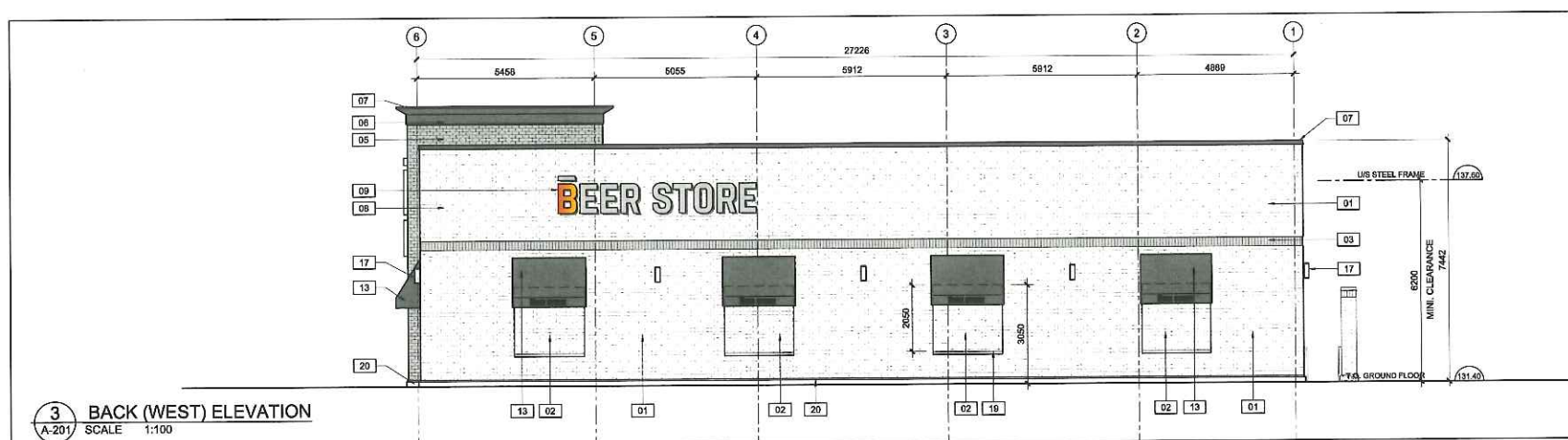
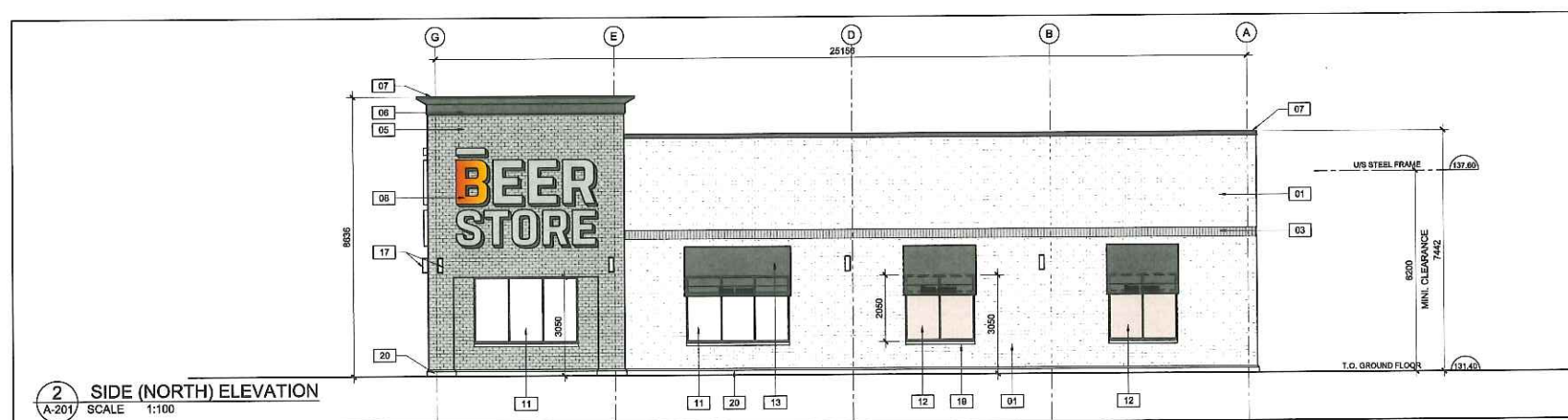


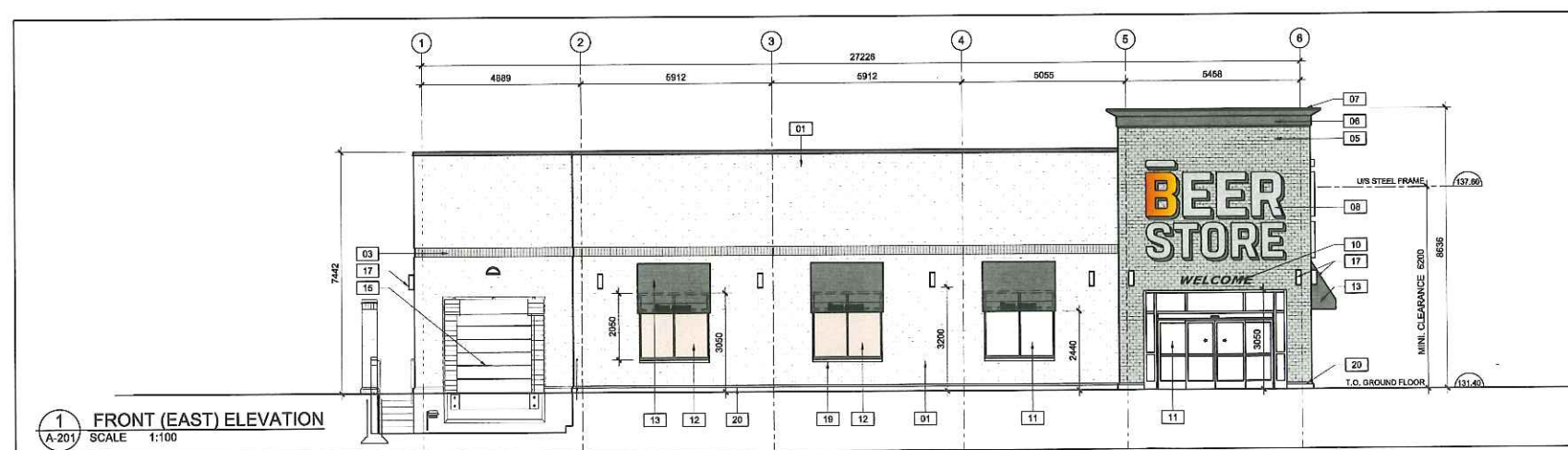
**4** SIDE (SOUTH) ELEVATION  
A-201 SCALE 1:100



**3** BACK (WEST) ELEVATION  
A-201 SCALE 1:100



**2** SIDE (NORTH) ELEVATION  
A-201 SCALE 1:100



**1** FRONT (EAST) ELEVATION  
A-201 SCALE 1:100

**ELEVATION NOTES:**

- 01 BRICK VENEER (MINERAL GREY, SUAVE FINISH) (BR-1).
- 02 BRICK VENEER "REVEAL" (MINERAL GREY, SUAVE FINISH) (BR-1).
- 03 BRICK SOLDIER COURSE REVEAL (ACADEMY BLACK, SUAVE FINISH) (BR-2).
- 04 BRICK VERTICAL REVEAL (MINERAL, SUAVE FINISH) (BR-1).
- 05 BRICK VENEER (ACADEMY BLACK) (BR-2).
- 06 PREFABRICATED CROWN MOULDING, COLOUR: (EF-1)
- 07 PRE-FINISHED METAL CAP FLASHING, COLOUR: (MISC-8).
- 08 LARGE FORMAT SIGNAGE TYPE 1, ILLUMINATED (BY TBS).
- 09 LARGE FORMAT SIGNAGE TYPE 2, NON ILLUMINATED (BY TBS).
- 10 "WELCOME" SIGN (BY TBS).
- 11 CLEAR GLAZING IN BLACK ANODIZED ALUMINUM FRAMING.
- 12 SPANDREL PANEL: WARM GREY PPG. 24-8287, IN BLACK ANODIZED ALUMINUM FRAMING.
- 13 VINYL WINDOW AWNINGS ON STEEL FRAMING (FRAME PTD. BLACK), COLOUR: FERRARI 502-2167 DARK GREY. (MISC-3).
- 14 INSULATED HOLLOW METAL DOOR AND FRAME, PTD. COLOUR TO MATCH (BR-1).
- 15 LOADING OIH DOOR
- 16 GUARD RAIL
- 17 UP/DOWN LIGHT WALL MOUNTED FIXTURE.
- 18 DOWN-LIGHT WALL MOUNTED FIXTURE.
- 19 PRE-CAST CONCRETE SILL (MISC-3).
- 20 PRE-CAST CONCRETE BASE (MISC-4).

no.	revision	date
2		
1	ISSUED FOR REVIEW	6 Sept. 2018

**N45 ARCHITECTURE INC.**  
71 Bank Street, 7th Floor - Ottawa, Ontario, K1P 5N2  
tel. 613.224.0095 fax 613.224.9811

**CARLETON PLACE RETAIL PHASE 3**

MCNEELY AVE., CARLETON PLACE, ON., CANADA

seal

drawing title <b>CRU -1 ELEVATIONS</b>	
scale AS SHOWN	drawn by J.J
date Sept. 2018	checked by R.M
project number <b>18-313</b>	drawing number <b>A - 201</b>
CONTRACTOR TO VERIFY ALL DIMENSIONS AND NOTIFY THE ARCHITECT OF ANY DISCREPANCIES BEFORE WORK COMMENCES.	
DO NOT SCALE DRAWINGS	