

NO.	ISSUED	DATE
1	OP	OCT 09 2018

DO NOT SCALE DRAWINGS. USE ONLY DIMENSIONS MARKED "ISSUED FOR CONSTRUCTION". VERIFY CONFIGURATIONS AND DIMENSIONS ON SITE BEFORE BEGINNING WORK. NOTIFY ARCHITECT IMMEDIATELY OF ANY ERRORS, OMISSIONS OR DISCREPANCIES. CHAMBERLAIN ARCHITECT SERVICES LIMITED AND CHAMBERLAIN CONSTRUCTION SERVICES LIMITED HAVE SIMILAR OWNERSHIP. CHAMBERLAIN ARCHITECT SERVICES LIMITED HAS COPYRIGHT. CONSTRUCTION OF A SUBSTANTIALLY SIMILAR BUILDING WITHOUT PERMISSION MAY VIOLATE THE COPYRIGHT OWNER'S RIGHTS. MAKING ANY CHANGES TO PLANS DOES NOT NECESSARILY AVOID COPYRIGHT INFRINGEMENT. INNOCENT INFRINGEMENT IS NOT A DEFENSE TO COPYRIGHT INFRINGEMENT. ©



OWNER
355 McNeely Hospitality Canada Inc.

COMFORT INN & SUITES

355 McNeely Avenue
Carleton Place

SHEET NAME

EXTERIOR ELEVATION I

START DATE APR 2018

DRAWN BY NS

CHECKED BY AM

SCALE As indicated

PROJECT NO 118031

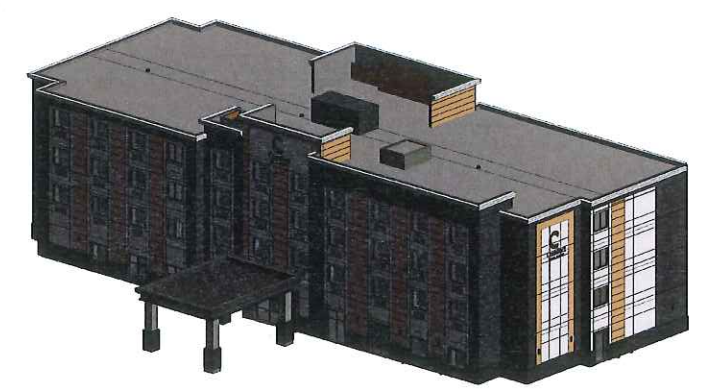
DRAWING

A201

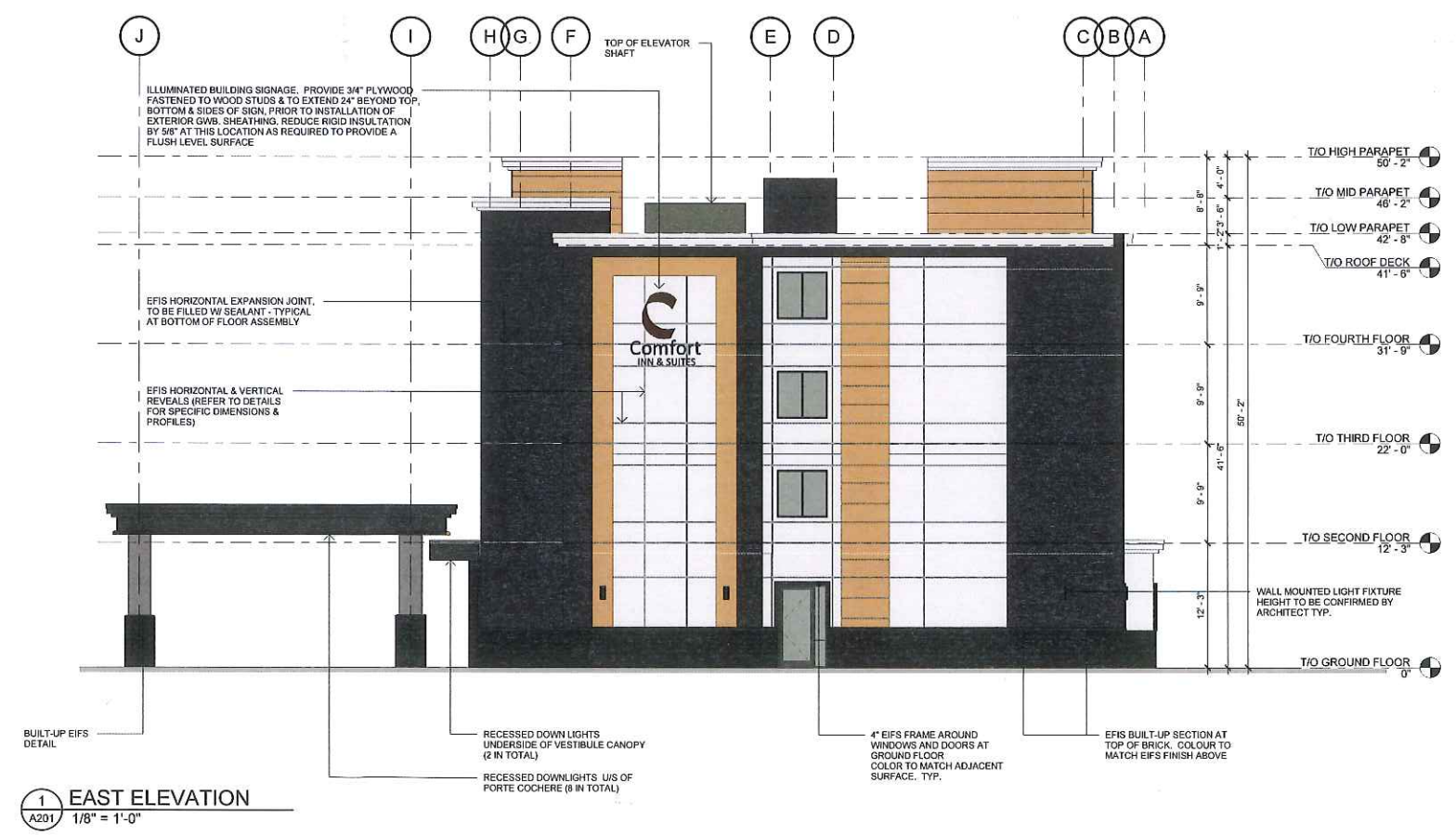


2 SOUTH ELEVATION (FRONT)
A201 1/8" = 1'-0"

MATERIAL	FINISH/COLOUR/DESCRIPTION
	EXTERIOR INSULATION FINISH SYSTEM -EFS 1 3" THICKNESS, SANDBLAST DPR, COLOR 104 DOVER SKY, BY DRYVIT OR APPROVED EQUAL ALTERNATIVE (WHITE)
	EXTERIOR INSULATION FINISH SYSTEM -EFS 2 5" THICKNESS, TERRAZZO 208 VESUVIUS, COLOR PRIME 634 GRANITE GRAY, BY DRYVIT OR APPROVED EQUAL ALTERNATIVE (BLACK)
	EXTERIOR INSULATION FINISH SYSTEM -EFS 3 3" THICKNESS, SANDBLAST DPR, COLOR 382 TAMALE, BY DRYVIT OR APPROVED EQUAL ALTERNATIVE (BEIGE)
	BRICK B1 BY BRAMPTON BRICK, DESIGNER SERIES SIZE METRIC JUMBO, COLOR RAVEN OR APPROVED EQUAL ALTERNATIVE



3 SOUTH-EAST VIEW
A201



1 EAST ELEVATION
A201 1/8" = 1'-0"

C:\Users\hurd\Documents\118031 Comfort Inn Carleton Place_Corridor-Corridor 18_Misc\A201

NO.	ISSUED	DATE
1	GP	OCT. 09 2018

DO NOT SCALE DRAWINGS. USE ONLY DIMENSIONS MARKED "ISSUED FOR CONSTRUCTION". VERIFY CONFIGURATIONS AND DIMENSIONS ON SITE BEFORE BEGINNING WORK. NOTIFY ARCHITECT IMMEDIATELY OF ANY ERRORS, OMISSIONS OR DISCREPANCIES.

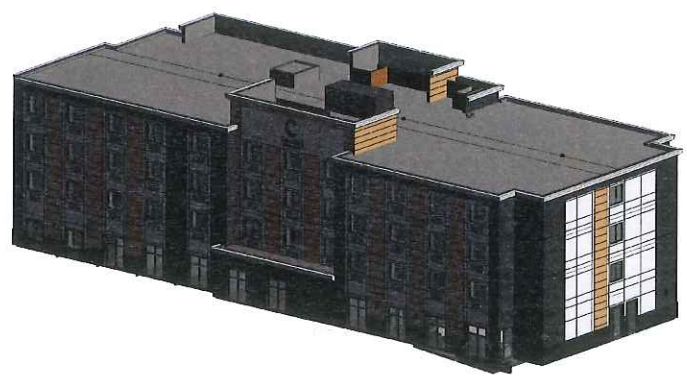
CHAMBERLAIN ARCHITECT SERVICES LIMITED AND CHAMBERLAIN CONSTRUCTION SERVICES LIMITED HAVE SIMILAR OWNERSHIP.

CHAMBERLAIN ARCHITECT SERVICES LIMITED HAS COPYRIGHT. CONSTRUCTING A SUBSTANTIALLY SIMILAR BUILDING WITHOUT PERMISSION MAY INFRINGE THE COPYRIGHT OWNERS RIGHTS. MAKING MINOR CHANGES TO PLANS DOES NOT NECESSARILY AVOID COPYRIGHT INFRINGEMENT. RECEIPT OF THIS DOCUMENT IS NOT A DEFENSE TO COPYRIGHT INFRINGEMENT. ©

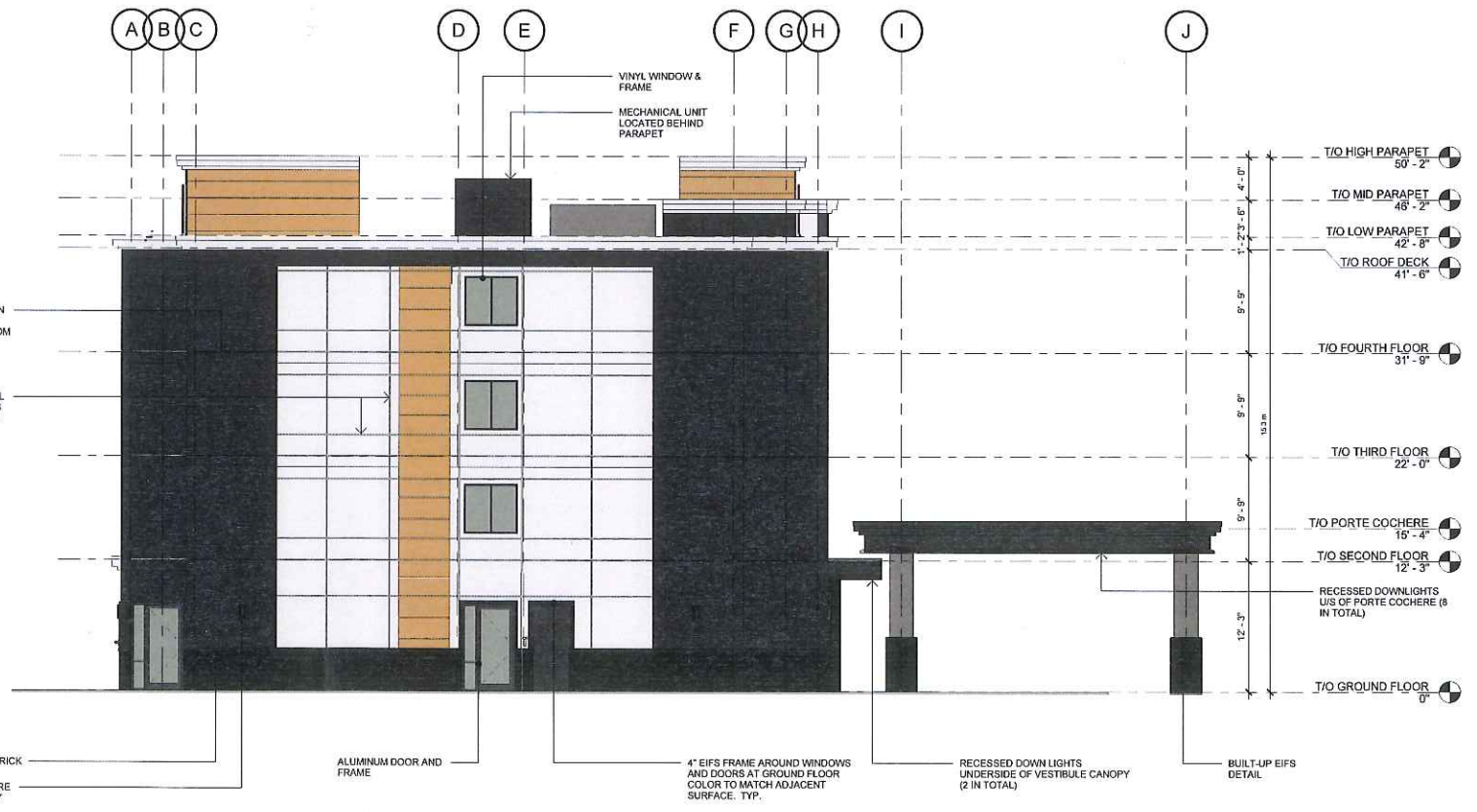


1 NORTH ELEVATION (BACK)
A202 1/8" = 1'-0"

MATERIAL	FINISH/COLOR/DESCRIPTION
	EXTERIOR INSULATION FINISH SYSTEM - EIFS 1 3" THICKNESS, SANDBLAST DPR, COLOR 104 DOVER SKY, BY DRYVIT OR APPROVED EQUAL ALTERNATIVE (WHITE)
	EXTERIOR INSULATION FINISH SYSTEM - EIFS 2 5" THICKNESS, TERRAZO 206 VESUVIUS, COLOR PRIME 634 GRANITE GRAY, BY DRYVIT OR APPROVED EQUAL ALTERNATIVE (BLACK)
	EXTERIOR INSULATION FINISH SYSTEM - EIFS 3 3" THICKNESS, SANDBLAST DPR, COLOR 382 TANKLE, BY DRYVIT OR APPROVED EQUAL ALTERNATIVE (BEIGE)
	BRICK 81 BY BRAMPTON BRICK, DESIGNER SERIES SIZE METRIC JUMBO, COLOR RAVEN OR APPROVED EQUAL ALTERNATIVE



3 NORTH-WEST VIEW
A202



2 WEST ELEVATION
A202 1/8" = 1'-0"

OWNER
355 McNeely Hospitality Canada Inc.

COMFORT INN & SUITES

355 McNeely Avenue
Carleton Place

SHEET NAME

EXTERIOR ELEVATION II

START DATE APR 2018

DRAWN BY NS

CHECKED BY AM

SCALE As indicated

PROJECT NO 118031

DRAWING

A202

C:\Users\cham\Documents\118031 Comfort Inn Carleton Place - Current\Phase 1B\Drawings\10000\10000-02-A202.dwg 10/02/2018 12:03:42 PM