



PSB REPORT

2024

QUARTER 3

LANARK
COUNTY

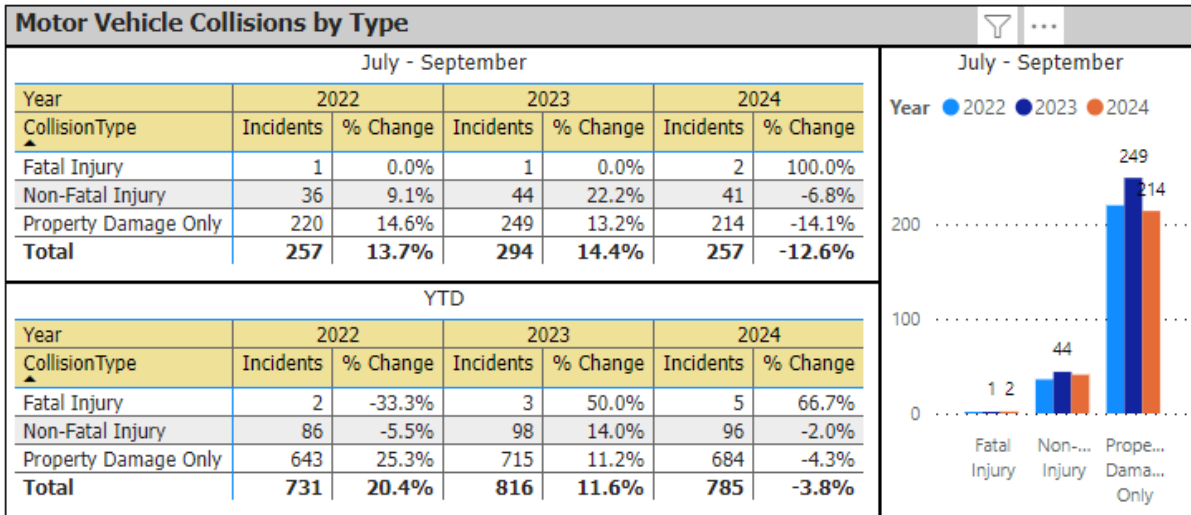
TABLE OF CONTENTS

COLLISIONS	3
FATALITIES	4
CHARGES	5
WARNINGS	6
VIOLENT CRIME	7
PROPERTY CRIME	8
DRUG CRIME	9
OTHER CRIME	10
CLEARANCE RATE	11
UNFOUNDED	12
COMPLAINTS/PATROL	13
YOUTH CHARGES	14
MENTAL HEALTH	15
OVERDOSE	16
VICTIM SERVICES	17

LANARK COUNTY POLICE SERVICE BOARD REPORT



OPP Detachment Board Report Collision Reporting System July - September 2024



LANARK COUNTY POLICE SERVICE BOARD REPORT



OPP Detachment Board Report Collision Reporting System July - September 2024

Fatalities in Detachment Area - Incidents									
July - September									
Type	Motor Vehicle			Motorized Snow Vehicle			Off-Road Vehicle		
Year	Alcohol/Drugs	Incidents	% Change	Alcohol/Drugs	Incidents	% Change	Alcohol/Drugs	Incidents	% Change
2022	0	1	0.0%	0	0	--	0	0	--
2023	0	1	0.0%	0	0	--	0	0	--
2024	0	2	100.0%	0	0	--	0	0	--

YTD									
Type	Motor Vehicle			Motorized Snow Vehicle			Off-Road Vehicle		
Year	Alcohol/Drugs	Incidents	% Change	Alcohol/Drugs	Incidents	% Change	Alcohol/Drugs	Incidents	% Change
2022	1	2	-33.3%	0	0	--	0	0	--
2023	0	2	0.0%	0	1	--	0	0	--
2024	0	5	150.0%	0	0	-100.0%	0	0	--

Fatalities in Detachment Area - Persons Killed									
July - September									
Type	Motor Vehicle		Motorized Snow Vehicle		Off-Road Vehicle				
Year	Persons Killed	% Change	Persons Killed	% Change	Persons Killed	% Change			
2022	1	0.0%	0	--	0	--			
2023	3	200.0%	0	--	0	--			
2024	2	-33.3%	0	--	0	--			

YTD									
Type	Motor Vehicle		Motorized Snow Vehicle		Off-Road Vehicle				
Year	Persons Killed	% Change	Persons Killed	% Change	Persons Killed	% Change			
2022	4	33.3%	0	--	0	--			
2023	6	50.0%	1	--	0	--			
2024	5	-16.7%	0	-100.0%	0	--			

Primary Causal Factors in Fatal Motor Vehicle Collisions												
July - September							YTD					
	2022	2023	2024		2022	2023	2024		2022	2023	2024	
Speeding	0	0	0	Speeding	0	1	0	Speeding	0	1	0	
Speeding % Change	--	--	--	Speeding % Change	-100.0%	--	-100.0%	Speeding % Change	-100.0%	--	-100.0%	
Distracted	0	0	0	Distracted	0	1	1	Distracted	0	1	1	
Distracted % Change	--	--	--	Distracted % Change	--	--	0.0%	Distracted % Change	--	--	0.0%	
Alcohol/Drugs	0	0	0	Alcohol/Drugs	1	0	0	Alcohol/Drugs	1	0	0	
Alcohol/Drugs % Change	--	--	--	Alcohol/Drugs % Change	--	-100.0%	--	Alcohol/Drugs % Change	--	-100.0%	--	
Wildlife	0	0	0	Wildlife	0	0	0	Wildlife	0	0	0	
Wildlife % Change	--	--	--	Wildlife % Change	--	--	--	Wildlife % Change	--	--	--	
NoSeatbelt	0	1	0	NoSeatbeltYTD	1	1	0	NoSeatbeltYTD	1	1	0	
NoSeatbelt YoY%	--	--	-100.0%	NoSeatbeltYTD YoY%	--	0.0%	-100.0%	NoSeatbeltYTD YoY%	--	0.0%	-100.0%	

July - September

Factor	2022	2023	2024
Speeding	0	0	0
Distracted	0	0	0
Alcohol/Drugs	0	0	0
Wildlife	0	0	0
NoSeatbelt	0	1	0

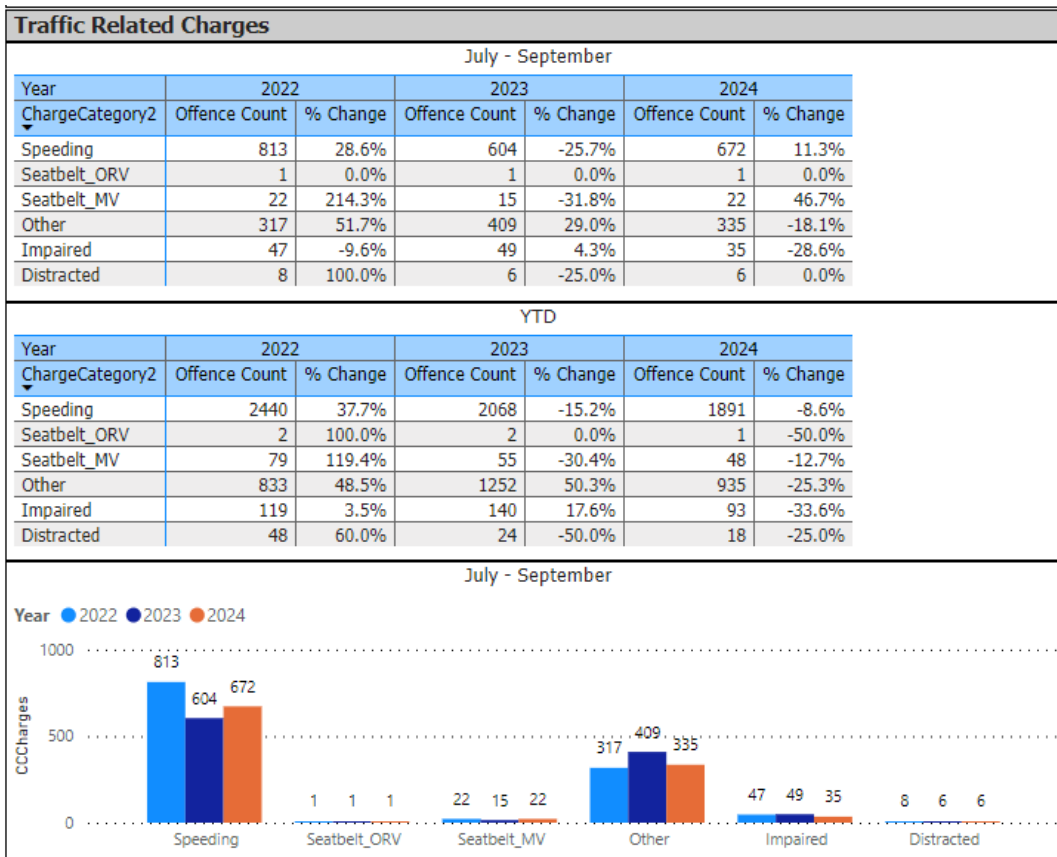
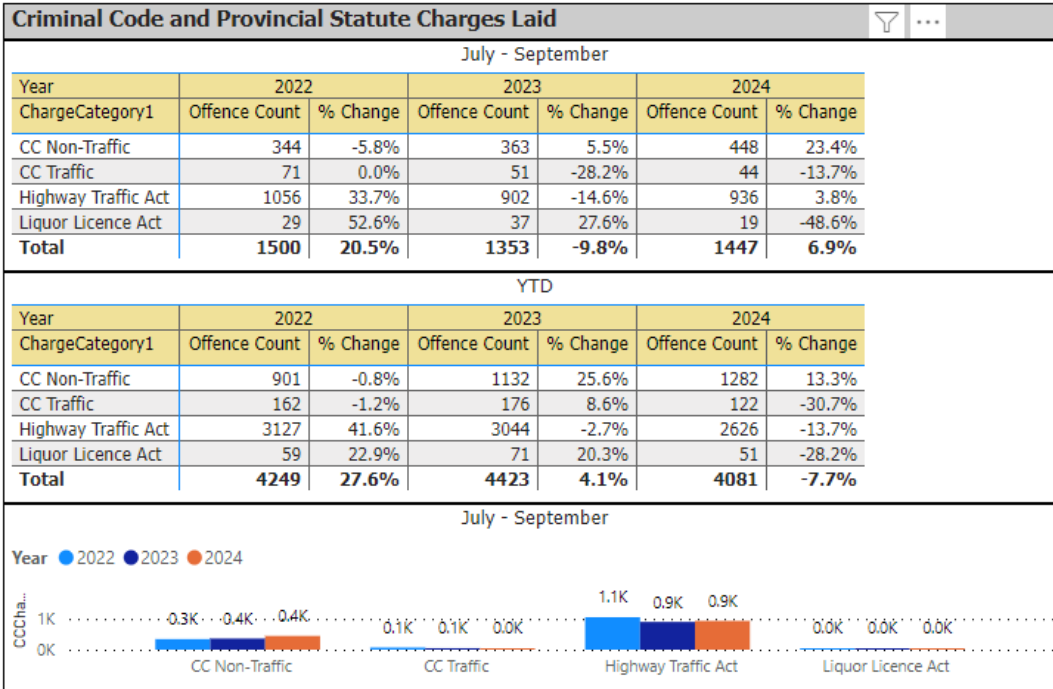
Data source (Collision Reporting System) date:

15-Oct-2024

LANARK COUNTY POLICE SERVICE BOARD REPORT



OPP Detachment Board Report Records Management System July - September 2024



LANARK COUNTY POLICE SERVICE BOARD REPORT



OPP Detachment Board Report Records Management System July - September 2024

eTicketing Warnings

July - September

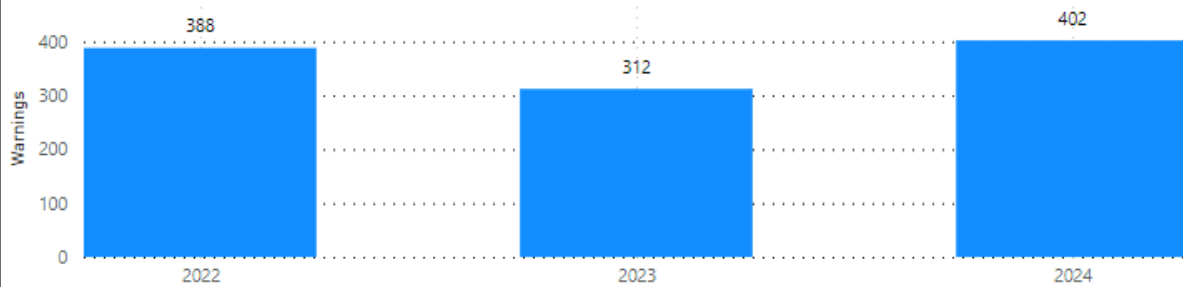
Year	2022		2023		2024	
Type	Warnings	% Change	Warnings	% Change	Warnings	% Change
Warnings	388	74.0%	312	-19.6%	402	28.8%

YTD

Year	2022		2023		2024	
Type	Warnings	% Change	Warnings	% Change	Warnings	% Change
Warnings	960	64.4%	998	4.0%	1035	3.7%

July - September

Type ● Warnings



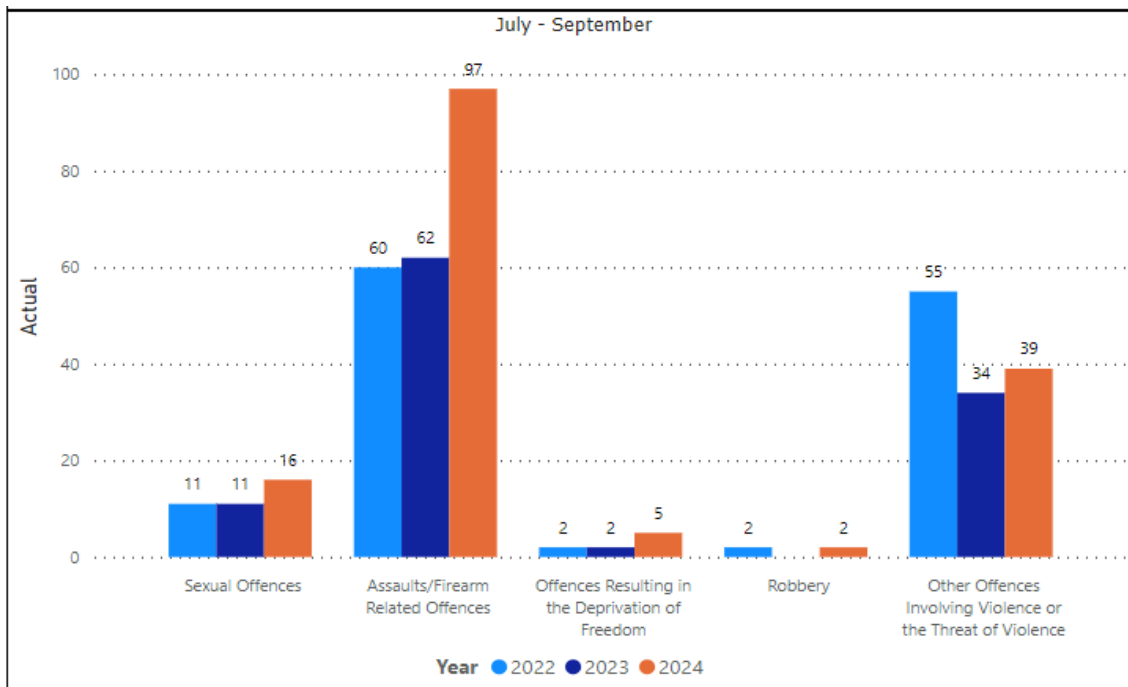
LANARK COUNTY POLICE SERVICE BOARD REPORT



OPP Detachment Board Report Records Management System July - September 2024

Violent Crime						
July-September						
Year	2022		2023		2024	
ViolationGrp	Actual	% Change	Actual	% Change	Actual	% Change
Homicides	0	--	0	--	0	--
Other Offences Causing Death	0	--	0	--	0	--
Attempted Murder	0	--	0	--	0	--
Sexual Offences	11	-50.0%	11	0.0%	16	45.5%
Assaults/Firearm Related Offences	60	33.3%	62	3.3%	97	56.5%
Offences Resulting in the Deprivation of Freedom	2	0.0%	2	0.0%	5	150.0%
Robbery	2	0.0%	0	-100.0%	2	--
Other Offences Involving Violence or the Threat of Violence	55	57.1%	34	-38.2%	39	14.7%
Offences in Relation to Sexual Services	0	--	0	--	0	--
Total	130	22.6%	109	-16.2%	159	45.9%

YTD						
Year	2022		2023		2024	
ViolationGrp	Actual	% Change	Actual	% Change	Actual	% Change
Homicides	0	--	0	--	2	--
Other Offences Causing Death	0	--	0	--	0	--
Attempted Murder	0	-100.0%	0	--	1	--
Sexual Offences	36	-30.8%	52	44.4%	57	9.6%
Assaults/Firearm Related Offences	158	23.4%	196	24.1%	246	25.5%
Offences Resulting in the Deprivation of Freedom	4	0.0%	8	100.0%	8	0.0%
Robbery	4	33.3%	2	-50.0%	3	50.0%
Other Offences Involving Violence or the Threat of Violence	130	18.2%	106	-18.5%	128	20.8%
Offences in Relation to Sexual Services	0	--	0	--	0	--
Total	332	11.4%	364	9.6%	445	22.3%



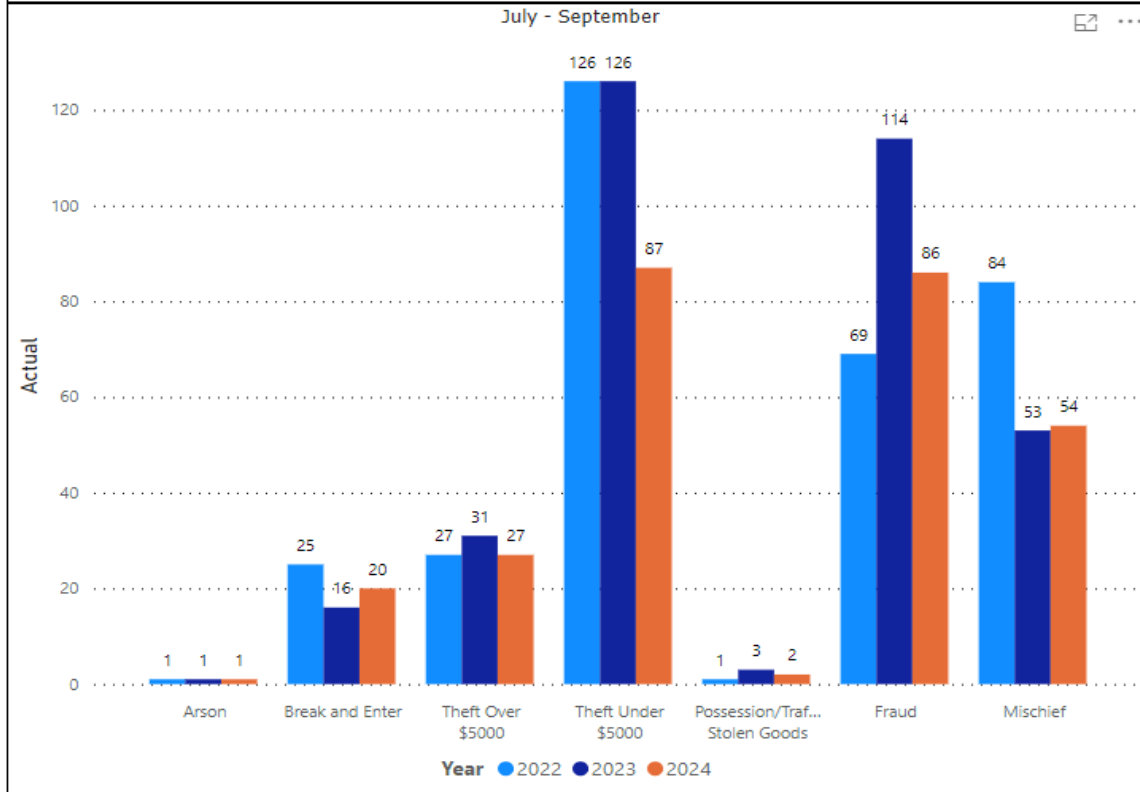
LANARK COUNTY POLICE SERVICE BOARD REPORT



OPP Detachment Board Report Records Management System July - September 2024

Property Crime						
July - September						
Year	2022		2023		2024	
ViolationGrp	Actual	% Change	Actual	% Change	Actual	% Change
Arson	1	--	1	0.0%	1	0.0%
Break and Enter	25	-7.4%	16	-36.0%	20	25.0%
Theft Over \$5000	27	17.4%	31	14.8%	27	-12.9%
Theft Under \$5000	126	-13.1%	126	0.0%	87	-31.0%
Possession/Trafficking Stolen Goods	1	0.0%	3	200.0%	2	-33.3%
Fraud	69	-16.9%	114	65.2%	86	-24.6%
Mischief	84	71.4%	53	-36.9%	54	1.9%
Total	333	1.5%	344	3.3%	277	-19.5%

YTD						
Year	2022		2023		2024	
ViolationGrp	Actual	% Change	Actual	% Change	Actual	% Change
Arson	3	--	1	-66.7%	3	200.0%
Break and Enter	61	17.3%	56	-8.2%	59	5.4%
Theft Over \$5000	62	19.2%	84	35.5%	70	-16.7%
Theft Under \$5000	300	-10.4%	378	26.0%	307	-18.8%
Possession/Trafficking Stolen Goods	4	33.3%	14	250.0%	8	-42.9%
Fraud	218	0.5%	317	45.4%	275	-13.2%
Mischief	178	53.4%	195	9.6%	183	-6.2%
Total	826	6.6%	1045	26.5%	905	-13.4%



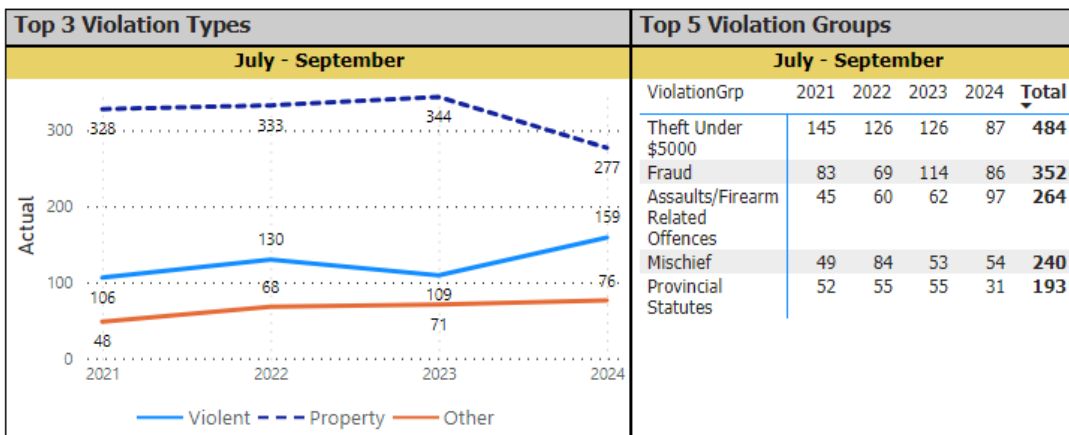
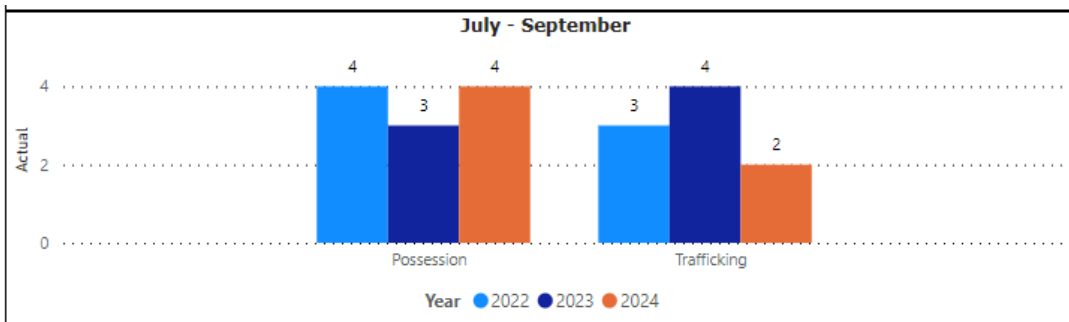
LANARK COUNTY POLICE SERVICE BOARD REPORT



OPP Detachment Board Report Records Management System July - September 2024

Drug Crime						
July - September						
Year	2022		2023		2024	
ViolationGrp	Actual	% Change	Actual	% Change	Actual	% Change
Possession	4	300.0%	3	-25.0%	4	33.3%
Trafficking	3	200.0%	4	33.3%	2	-50.0%
Importation & Production	0	--	0	--	0	--
Cannabis Possession	0	--	0	--	0	--
Cannabis Distribution	0	--	0	--	0	--
Cannabis Sale	0	--	0	--	0	--
Cannabis Importation & Exportation	0	--	0	--	0	--
Cannabis Production	0	-100.0%	0	--	0	--
Other Cannabis Violations	0	--	0	--	0	--
Total	7	133.3%	7	0.0%	6	-14.3%

YTD						
Year	2022		2023		2024	
ViolationGrp	Actual	% Change	Actual	% Change	Actual	% Change
Possession	7	133.3%	20	185.7%	13	-35.0%
Trafficking	12	100.0%	16	33.3%	6	-62.5%
Importation & Production	0	-100.0%	0	--	1	--
Cannabis Possession	0	--	0	--	0	--
Cannabis Distribution	0	--	0	--	0	--
Cannabis Sale	0	-100.0%	0	--	0	--
Cannabis Importation & Exportation	0	--	0	--	0	--
Cannabis Production	0	-100.0%	0	--	0	--
Other Cannabis Violations	0	--	0	--	0	--
Total	19	58.3%	36	89.5%	20	-44.4%



LANARK COUNTY POLICE SERVICE BOARD REPORT



OPP Detachment Board Report Records Management System July - September 2024

Other Crime Occurrences

July - September

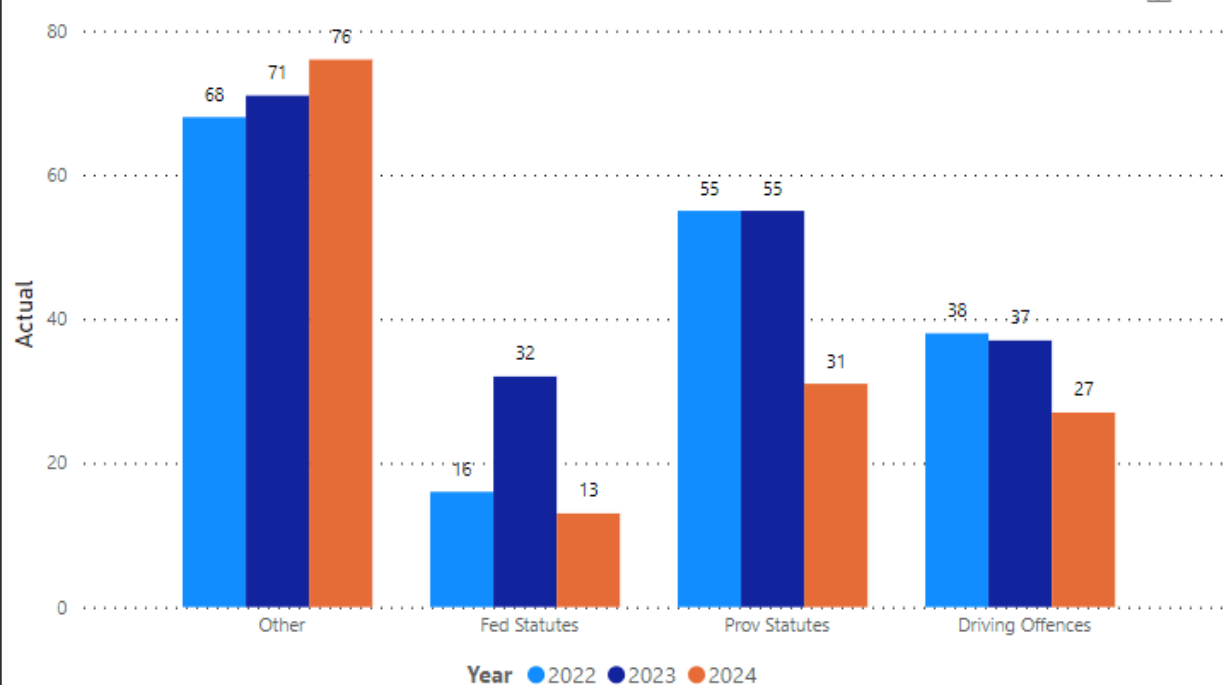


Year	2022		2023		2024	
Violation_rollup	Actual	% Change	Actual	% Change	Actual	% Change
Other	68	41.7%	71	4.4%	76	7.0%
Fed Statutes	16	-23.8%	32	100.0%	13	-59.4%
Prov Statutes	55	5.8%	55	0.0%	31	-43.6%
Driving Offences	38	2.7%	37	-2.6%	27	-27.0%
Total	177	12.0%	195	10.2%	147	-24.6%

YTD

Year	2022		2023		2024	
Violation_rollup	Actual	% Change	Actual	% Change	Actual	% Change
Other	162	15.7%	225	38.9%	237	5.3%
Fed Statutes	21	-51.2%	54	157.1%	22	-59.3%
Prov Statutes	122	-3.2%	113	-7.4%	82	-27.4%
Driving Offences	86	-7.5%	111	29.1%	91	-18.0%
Total	391	-2.7%	503	28.6%	432	-14.1%

July - September



LANARK COUNTY POLICE SERVICE BOARD REPORT



OPP Detachment Board Report Records Management System July - September 2024

Clearance Rate

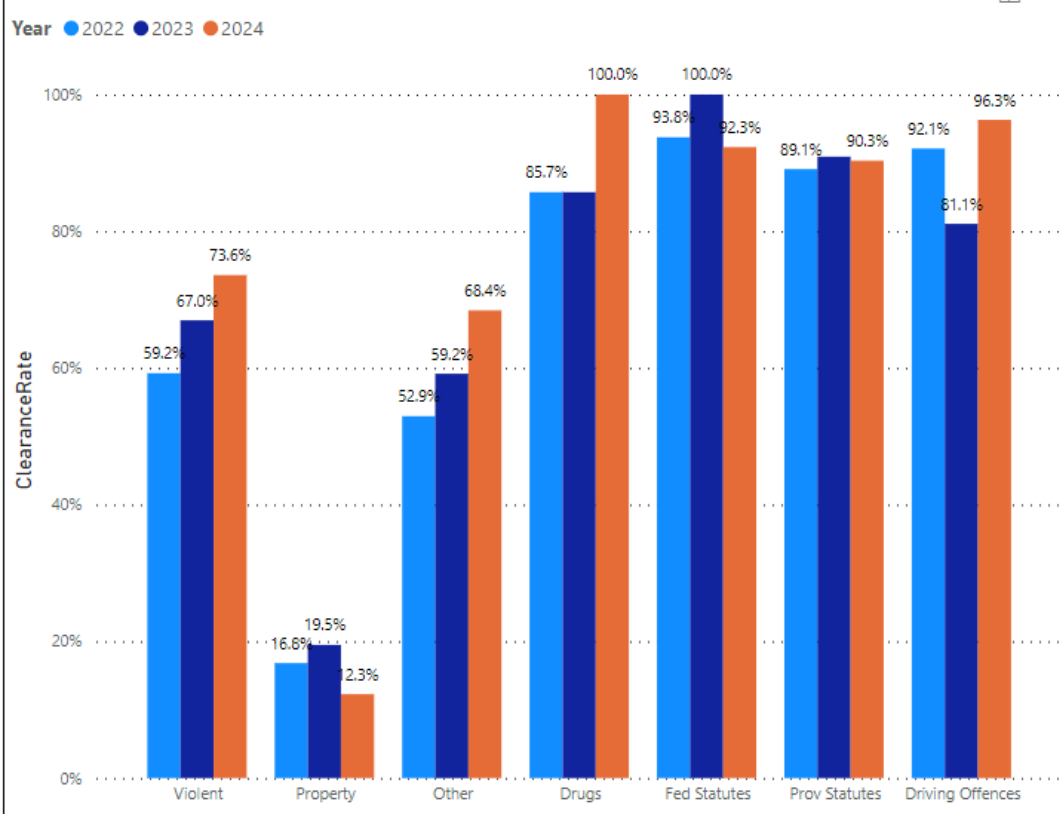
July - September

Year	2022		2023		2024	
	%	% Change	%	% Change	%	% Change
Violent	59.2%	-4.9%	67.0%	13.1%	73.6%	9.9%
Property	16.8%	12.6%	19.5%	15.8%	12.3%	-37.0%
Other	52.9%	-9.2%	59.2%	11.7%	68.4%	15.7%
Drugs	85.7%	157.1%	85.7%	0.0%	100.0%	16.7%
Fed Statutes	93.8%	-1.6%	100.0%	6.7%	92.3%	-7.7%
Prov Statutes	89.1%	-5.5%	90.9%	2.0%	90.3%	-0.6%
Driving Offences	92.1%	0.2%	81.1%	-12.0%	96.3%	18.8%

YTD

Year	2022		2023		2024	
	%	% Change	%	% Change	%	% Change
Violent	61.4%	-4.1%	68.7%	11.8%	69.7%	1.4%
Property	14.3%	9.6%	18.2%	27.3%	19.1%	5.1%
Other	59.9%	-5.8%	60.0%	0.2%	58.6%	-2.3%
Drugs	73.7%	10.5%	83.3%	13.1%	80.0%	-4.0%
Fed Statutes	95.2%	-2.5%	100.0%	5.0%	86.4%	-13.6%
Prov Statutes	91.0%	1.5%	91.2%	0.2%	92.7%	1.7%
Driving Offences	91.9%	-0.7%	88.3%	-3.9%	84.6%	-4.2%

July - September



LANARK COUNTY POLICE SERVICE BOARD REPORT

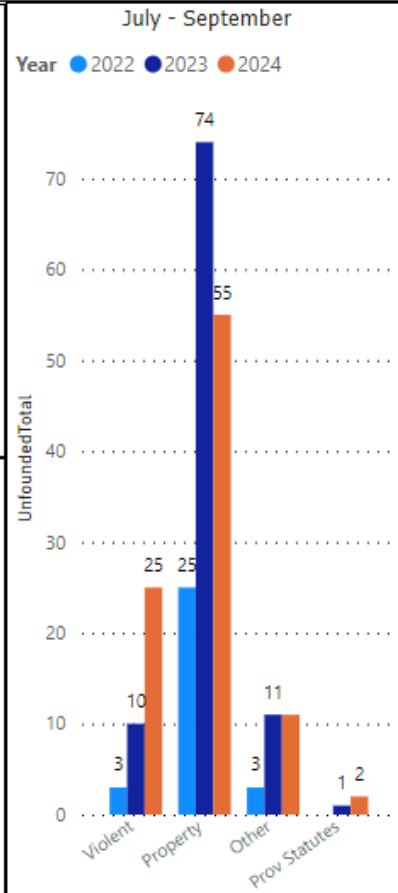


OPP Detachment Board Report Records Management System July - September 2024

Unfounded

July - September						
Year	2022		2023		2024	
Violation_rollup	Count	% Change	Count	% Change	Count	% Change
Violent	3	-66.7%	10	233.3%	25	150.0%
Property	25	-3.8%	74	196.0%	55	-25.7%
Other	3	0.0%	11	266.7%	11	0.0%
Drugs	0	--	0	--	0	--
Fed Statutes	0	--	0	--	0	--
Prov Statutes	0	--	1	--	2	100.0%
Driving Offences	0	--	0	--	0	--
Total	31	-18.4%	96	209.7%	93	-3.1%

YTD						
Year	2022		2023		2024	
Violation_rollup	Count	% Change	Count	% Change	Count	% Change
Violent	13	-51.9%	20	53.8%	55	175.0%
Property	90	20.0%	169	87.8%	189	11.8%
Other	7	-53.3%	20	185.7%	30	50.0%
Drugs	0	--	1	--	0	-100.0%
Fed Statutes	0	-100.0%	0	--	0	--
Prov Statutes	0	-100.0%	2	--	2	0.0%
Driving Offences	0	--	0	--	0	--
Total	110	-8.3%	212	92.7%	276	30.2%

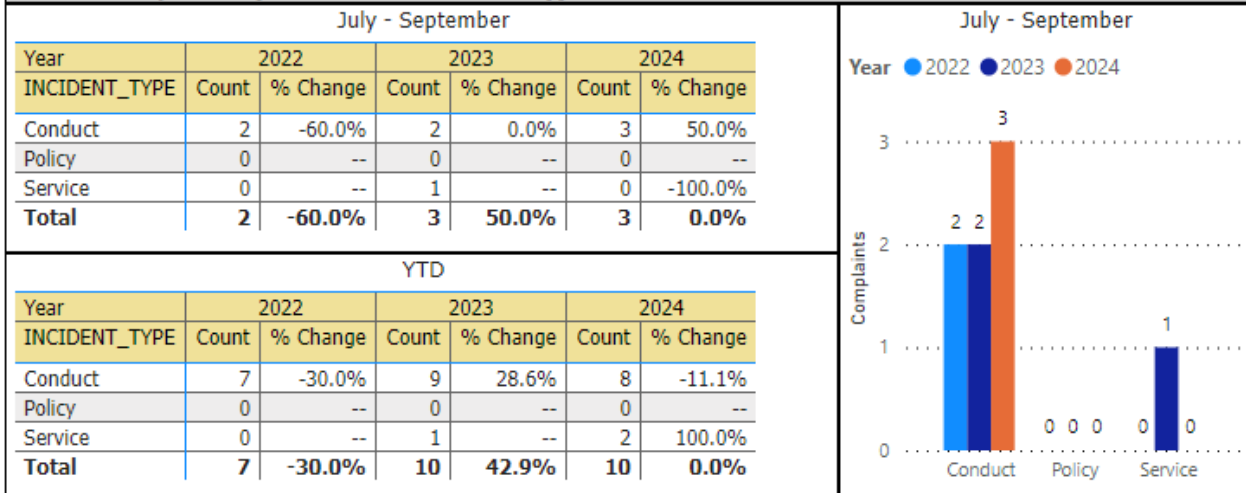


LANARK COUNTY POLICE SERVICE BOARD REPORT



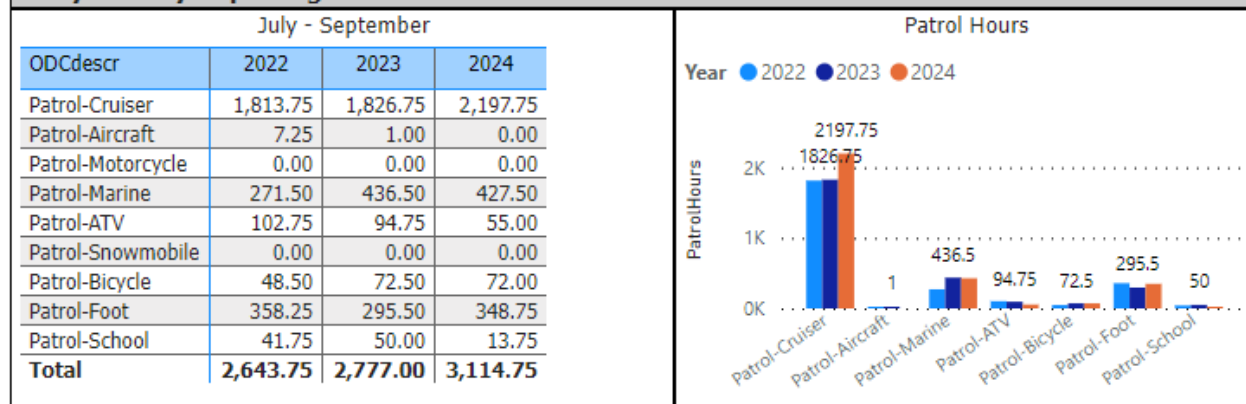
OPP Detachment Board Report Records Management System July - September 2024

Public Complaints (Detachment Level Only)



Daily Activity Reporting

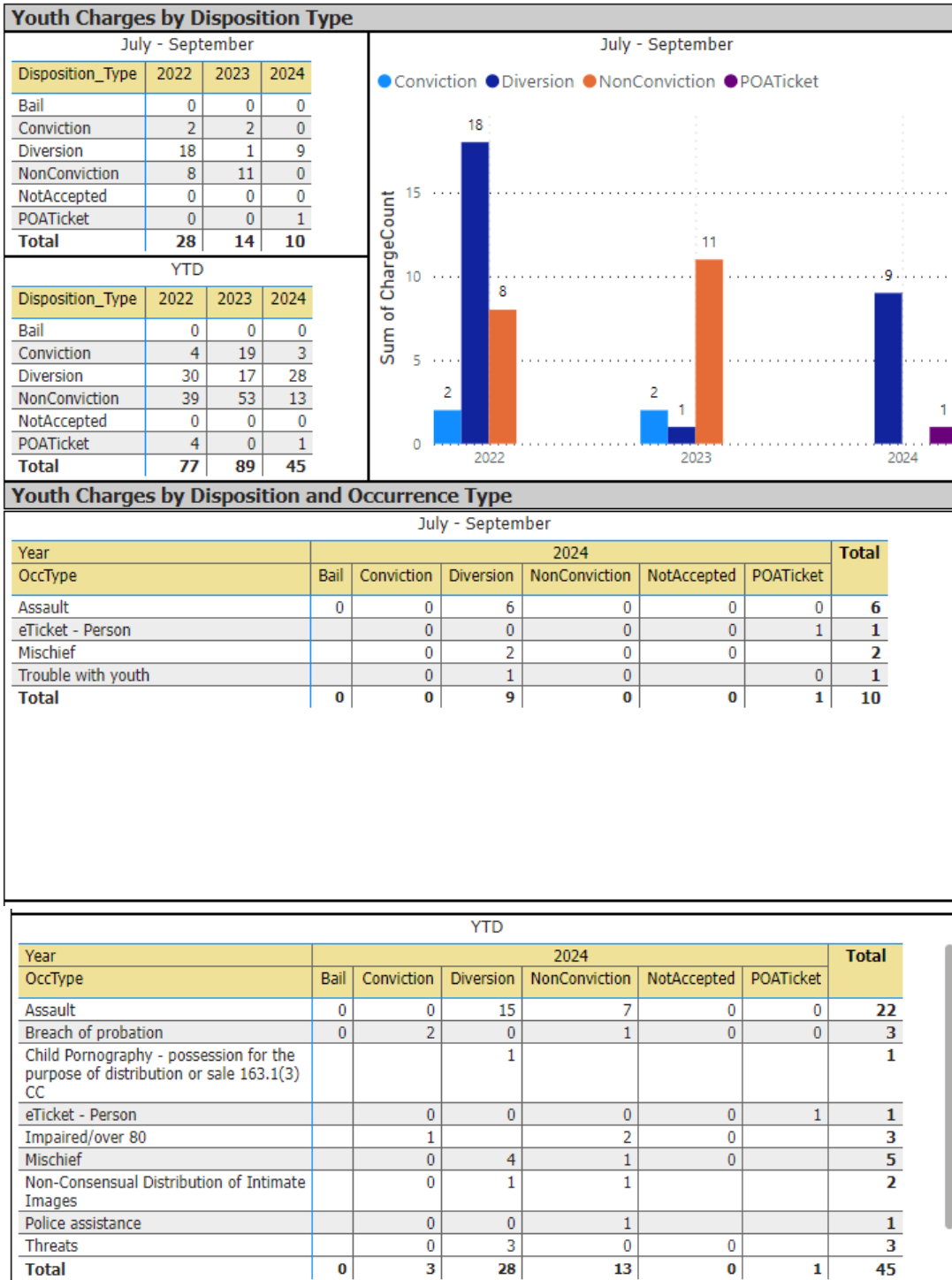
Daily Activity Reporting Patrol Hours



LANARK COUNTY POLICE SERVICE BOARD REPORT



OPP Detachment Board Report Records Management System July - September 2024

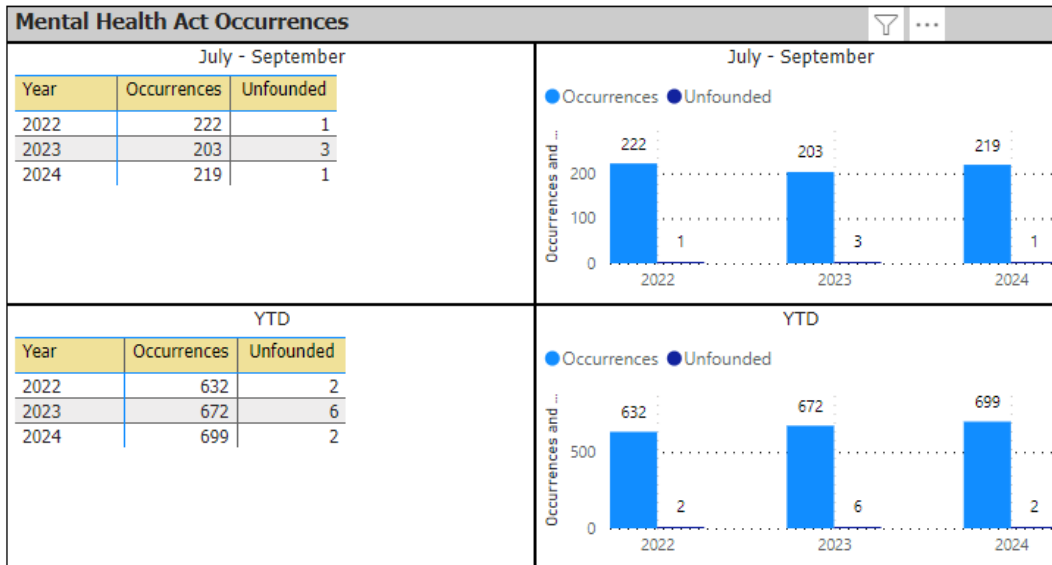


The tables and chart on this page present summarized youth charges by disposition and occurrence type that have been recorded in the OPP Niche RMS application. Of note... the Niche data sourced for this report page only lists youth charges that have had a disposition type entered against them. Therefore, please be aware that the counts of youth charges entries on this report page are under stating the potential sum of youth charges that are in OPP Niche RMS.

LANARK COUNTY POLICE SERVICE BOARD REPORT



OPP Detachment Board Report Records Management System July - September 2024



Mental Health Act Occurrences by Occurrence Type

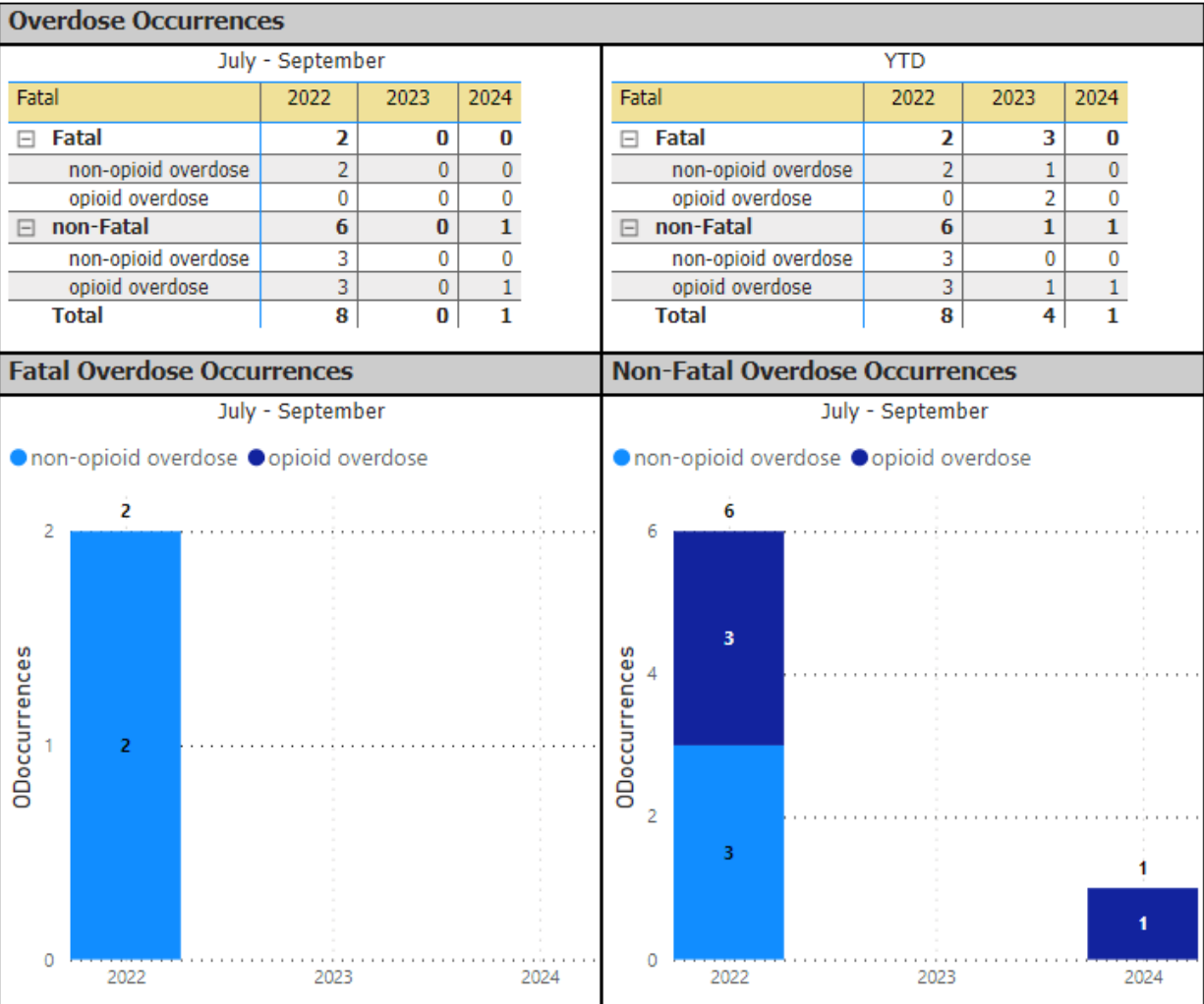
July - September

Year	2024	
OccurrenceType	Occurrences	Unfounded
911 call/911 hang-up	1	0
Ambulance Assistance	1	0
Assault	12	1
Assist Other Non Police Agency	2	0
Assist Other Police Agency	1	0
Attempt or threat of suicide	33	0
Bail violations	3	0
B-E bus/res/oth	1	0
Domestic dispute	10	0
Family dispute	10	0
Fraud	1	0
Landlord tenant problem	1	0
Liquor Licence Control Act	1	0
Mental health act	111	0
Mischief	1	0
Missing person	3	0
Motor vehicle collision	1	0
Neighbour dispute	3	0
Noise complaint	2	0
Other criminal code	2	0
Person Well-Being Check	6	0
Police assistance	6	0
Suspicious person	1	0
Threats	4	0
Unwanted person	1	0
Weapons	1	0
Total	219	1

LANARK COUNTY POLICE SERVICE BOARD REPORT



OPP Detachment Board Report Records Management System July - September 2024



LANARK COUNTY POLICE SERVICE BOARD REPORT



OPP Detachment Board Report Records Management System July - September 2024

