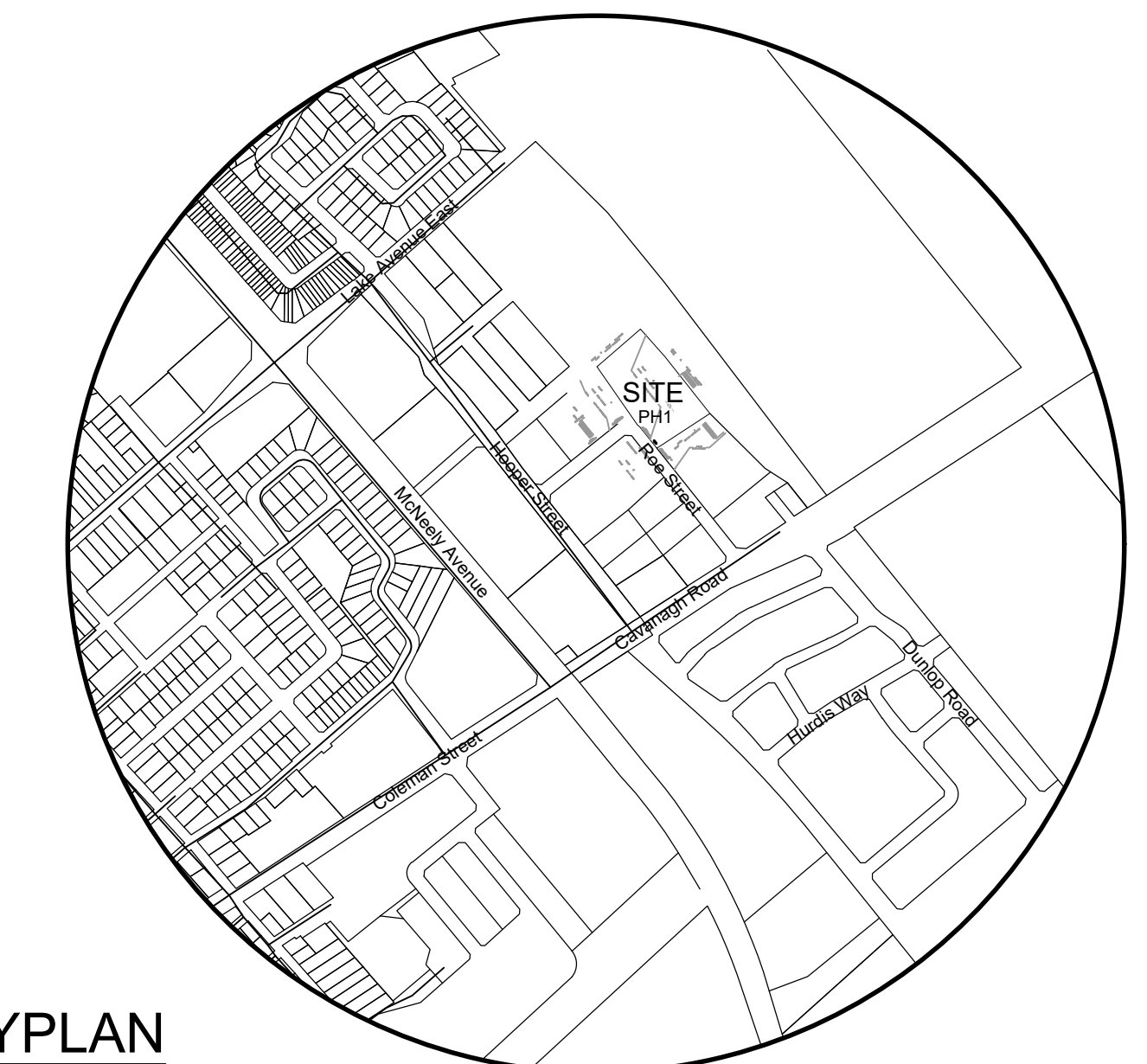
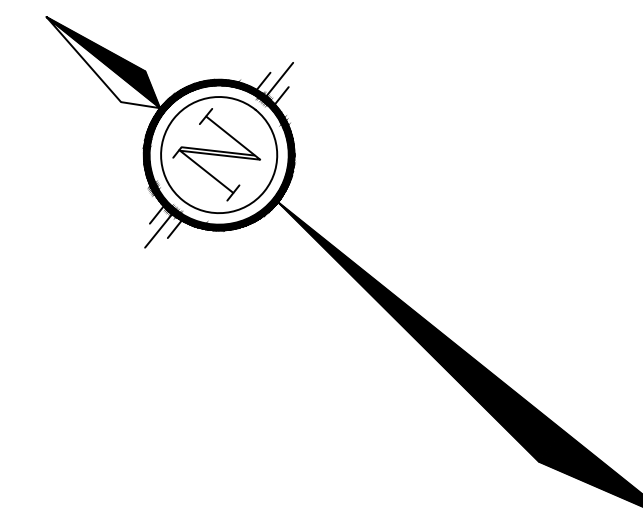


LEGEND:

- Property Boundary
- Zoning Setbacks
- Proposed Security Bollards (1.6m Spacing)
- Proposed Swale
- Grassed Area
- Heavy Duty Asphalt
- Line Painting
- Proposed Jersey Barrier Location
- Proposed Sanitary Manhole
- Existing Sanitary Manhole
- Existing Fire Hydrant
- Existing Hydro Pole

DEVELOPMENT STANDARDS: Business Campus Town of Carleton Place By-Law 15-2015		
Discretionary Use: Parking Lot	Required	Provided
Minimum Lot Area (m ²)	Nil	11813.5m ²
Maximum Lot Coverage (%)	70%	n/a
Minimum Lot Frontage (m)	Nil	55.0m
Minimum Front Yard (m)	6.0m	n/a
Minimum Exterior Yard (m)	6.0m	n/a
Minimum Interior Side Yard (m)	3.5m	n/a
Minimum Rear Yard (m)	8.0m	n/a
Landscaped Open Space (Minimum)	10%	16%
Maximum Building Height (m)	24m	n/a
Section 3.29 Parking & Storage of Vehicles		
Total	Parking Provided	124



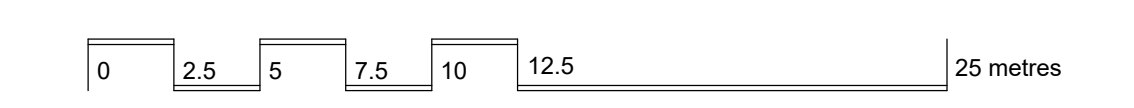
KEYPLAN
NOT TO SCALE

SITE & LANDSCAPE PLAN

41 ROE STREET

PART OF LOT 16
CONCESSION 11
PARTS 3 & 8, 27R-11243
Geographic Township of Beckwith
TOWN OF CARLETON PLACE
COUNTY OF LANARK

Phase 1 - Parking Lot
Forlorn River Holdings Inc.



SCALE 1:250

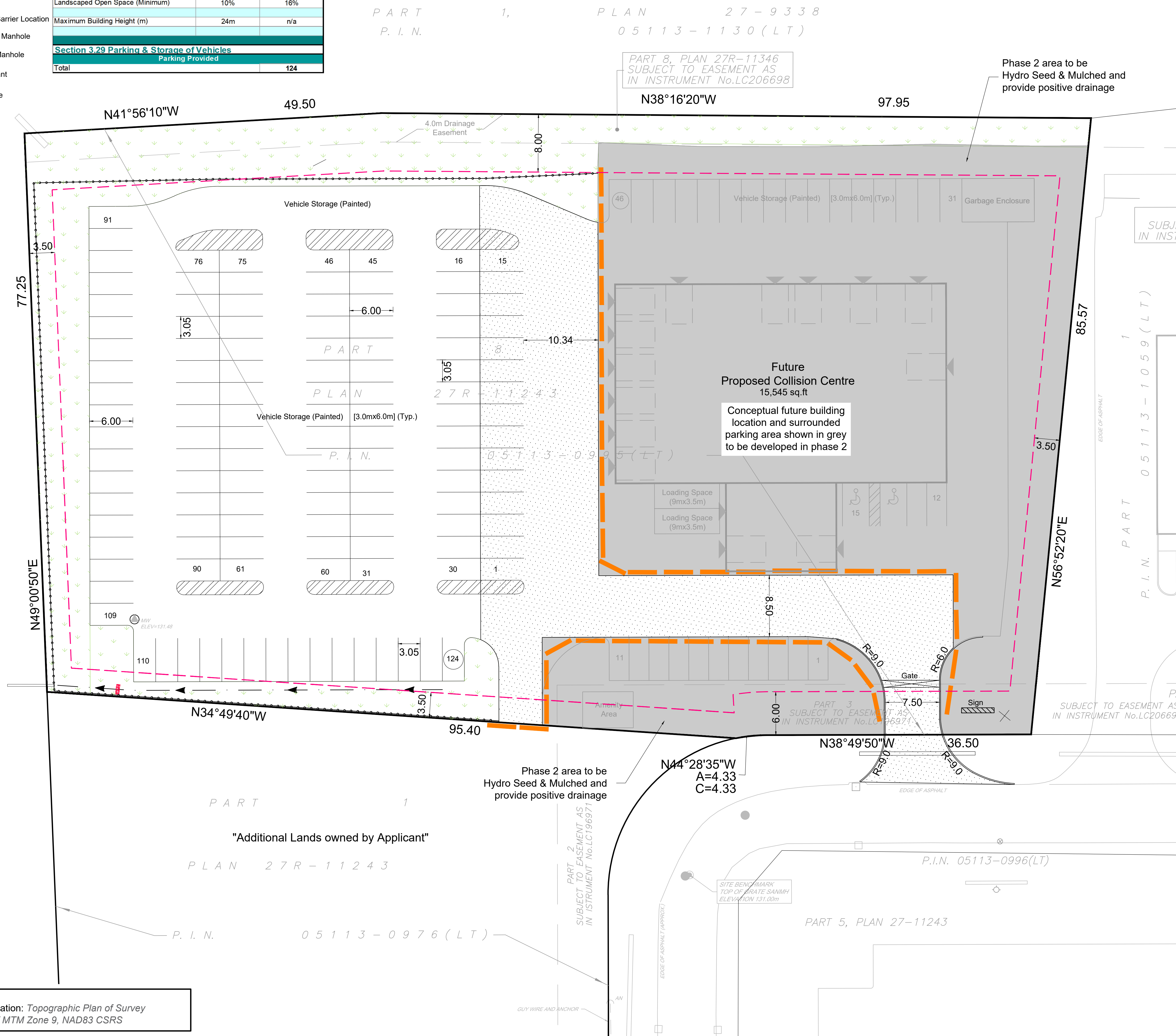
No.	REVISION	DATE	BY
1	PREPARED FOR DEVELOPMENT PERMIT APPLICATION	MAY 12/26	JJ

NOVATECH
Engineers, Planners & Landscape Architects
Suite 200, 240 Michael Cowpland Drive
Ottawa, Ontario, Canada K2M 1P6

Telephone: (613) 254-9643
Facsimile: (613) 254-5867
Website: www.novatech-eng.com

ISSUED	MAY, 2026
PROJECT No.	126002
DRAWING No.	126002-SP

SOURCE REFERENCE:
Legal & Topographic Information: Topographic Plan of Survey
Callon Dietz / Jan 29, 2026 / MTM Zone 9, NAD83 CSRS



C:\2026\126002\CAD\Planning\Site Plan\126002-SP-1-Ph1.dwg SP-1 - May 14, 2026 - 2:55pm, wendes