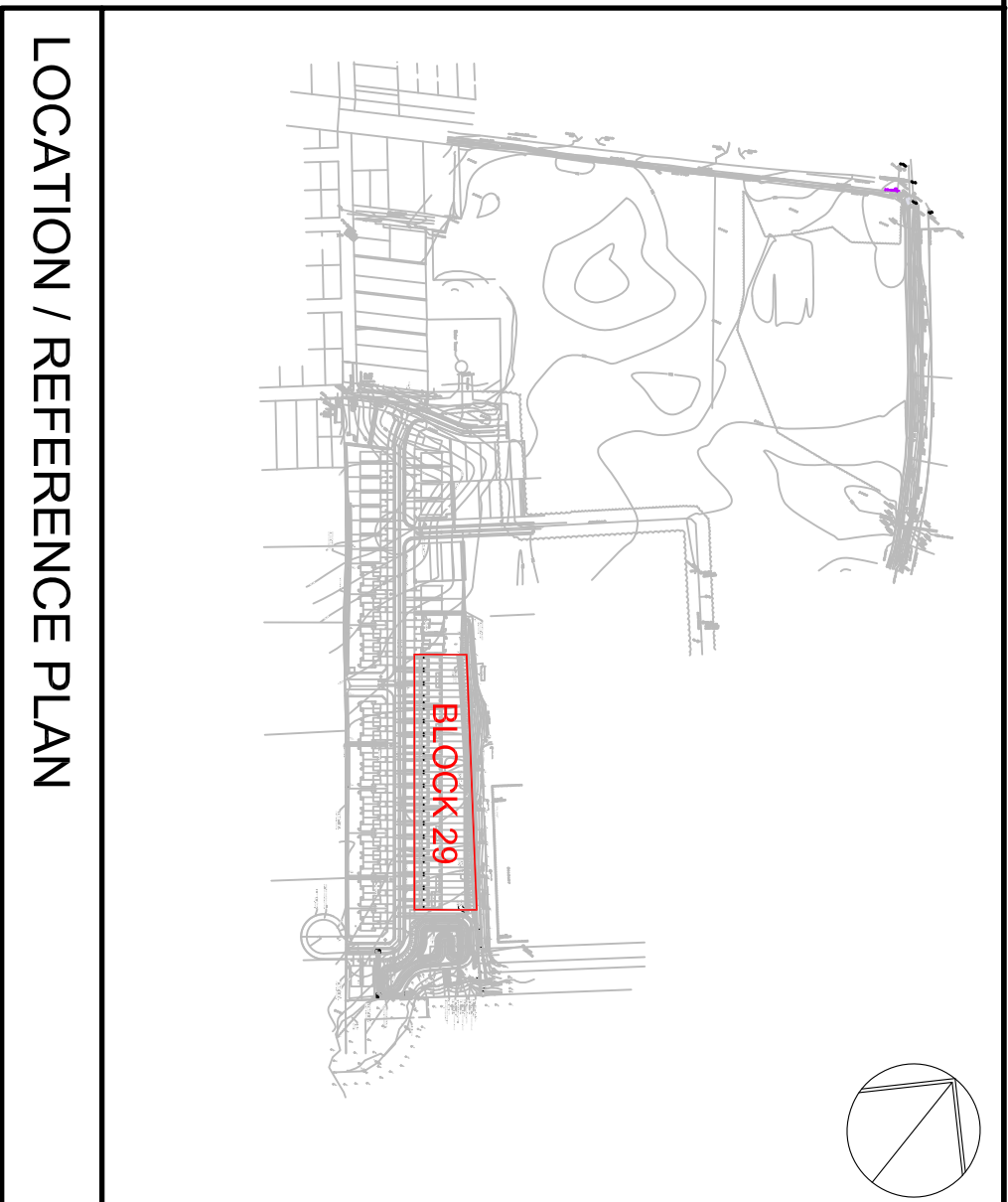
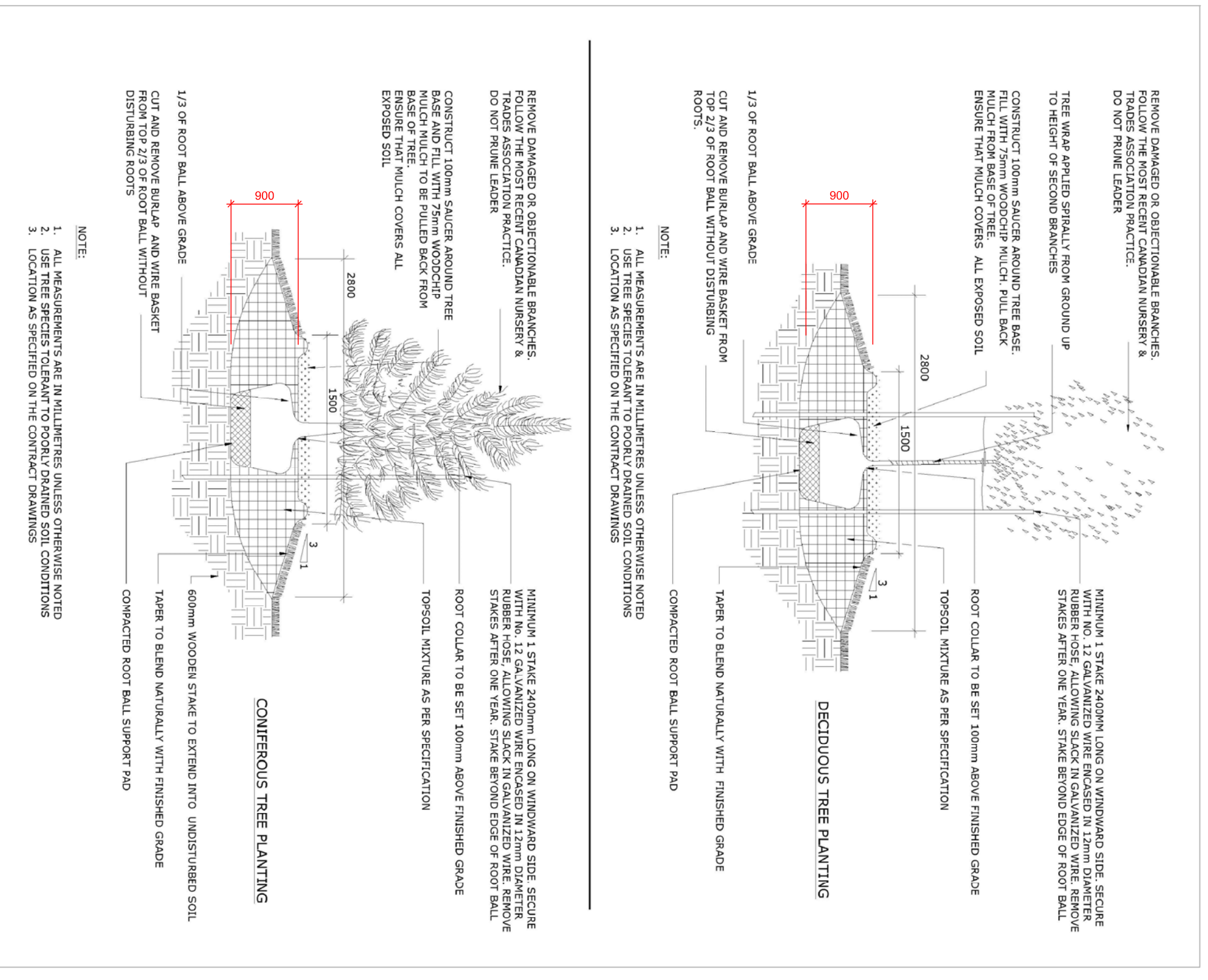
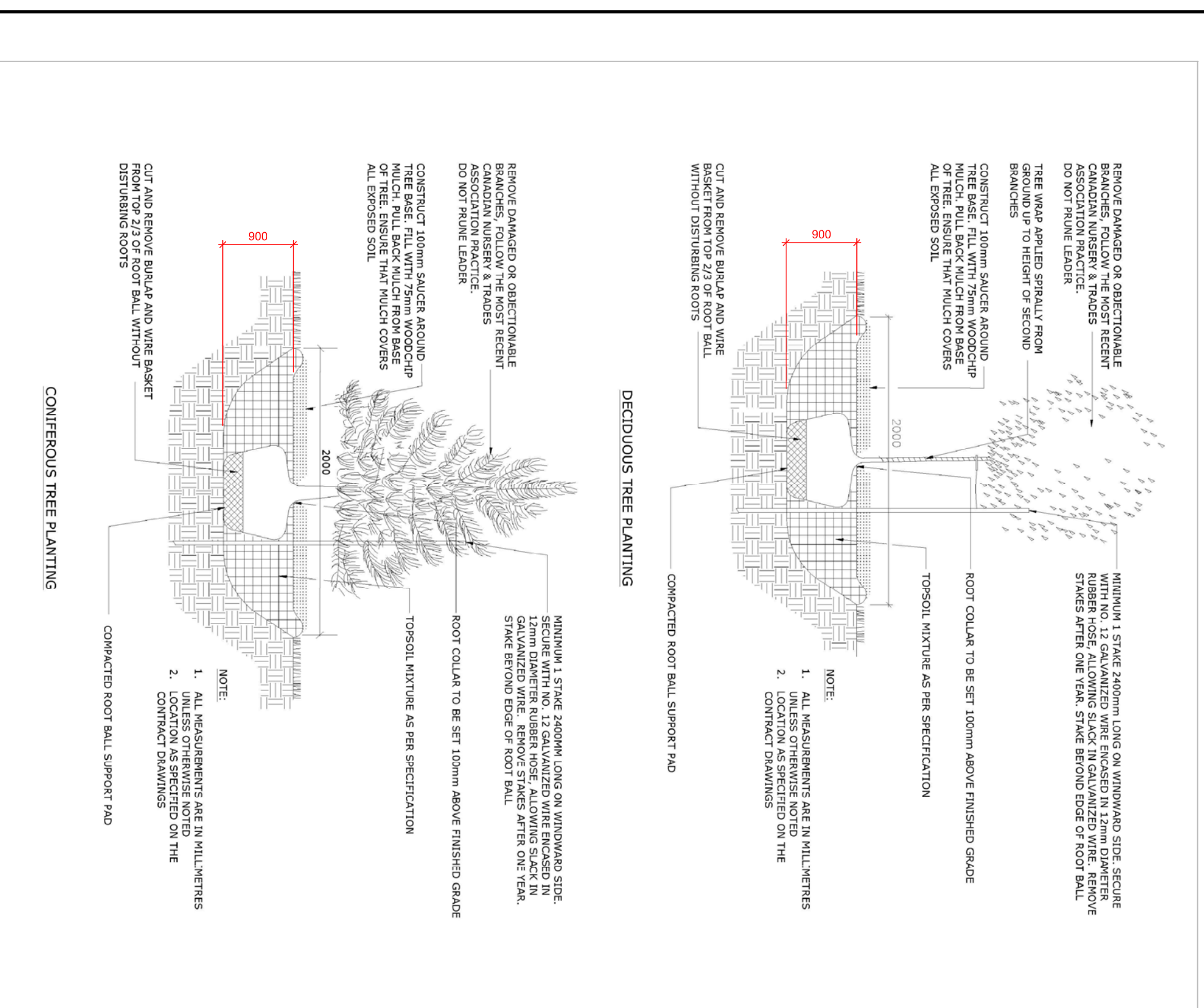
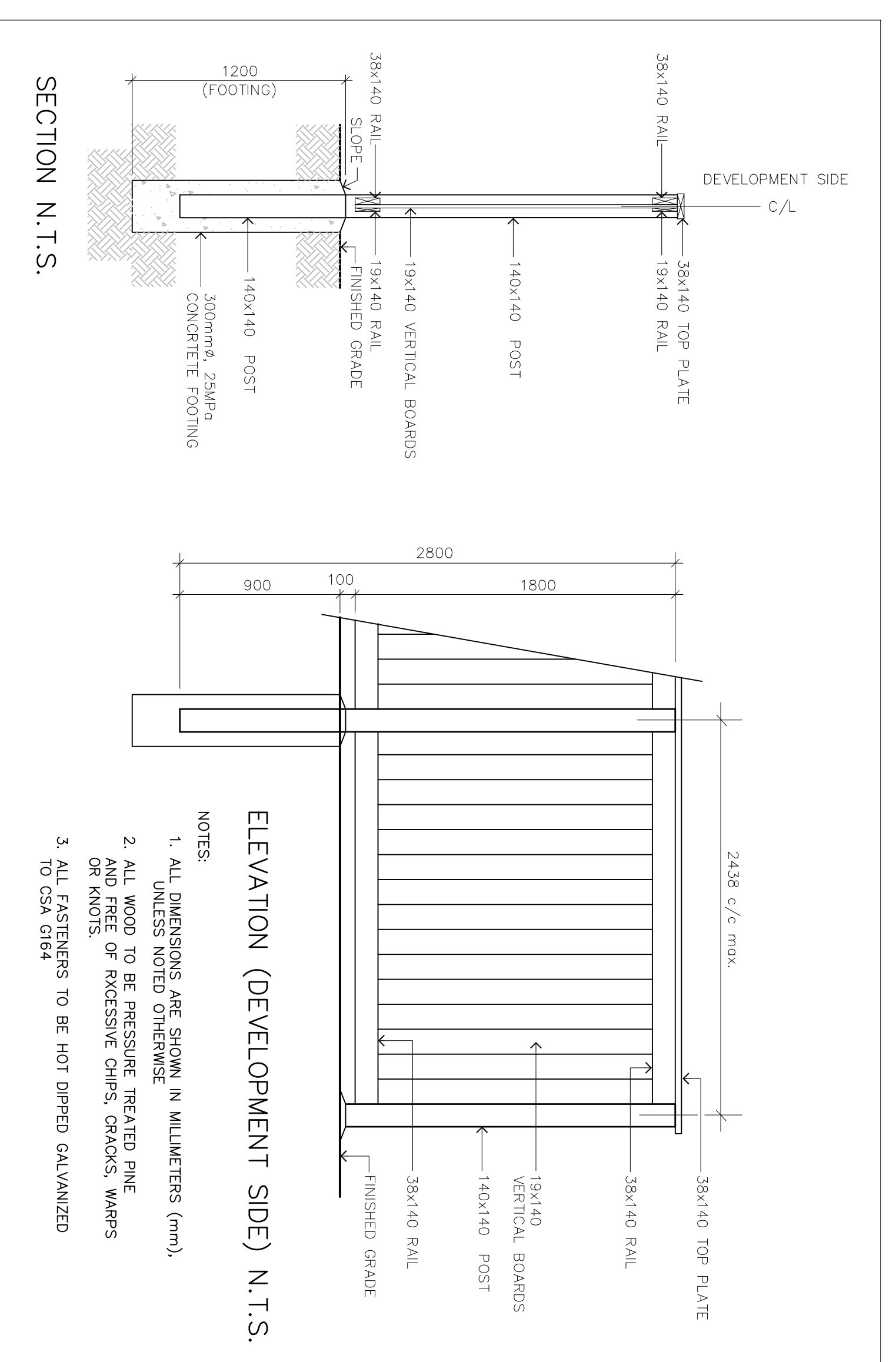


- ### GENERAL NOTES FOR STREET TREE PLANTING
- This drawing shall be read in conjunction with all relevant Engineering and related Drawings and Documents.
 - Refer to Engineering Drawings for Grading and Services.
 - Contractor shall provide the location(s) of all anticipated tree locations by consulting Municipal Ordinances and Utilities to ensure that proposed tree locations are adequate for tree growth and do not interfere with existing or future utilities.
 - Plant material shall be No. 1 Grade and shall comply with the Metric Guide Specifications for Nursery Stock (latest edition), published by the Canadian Nursery Trades Association (CNTA).
 - Plant Material locations are Schematic / Approximate only. Contractor shall stake out locations on site prior to work.
 - Sod areas to receive 125mm topsoil. Sod shall be No. 1 quality conforming to the Canadian Nursery Sod growers Association (CNSA) standards.
 - Contractor shall guarantee all plant material for a period of one (1) full year from the date of final acceptance. Street trees shall be planted:
 - 60mm cal. from street lights
 - 60mm cal. from street light and sidewalks
 - 25mm cal. from road curb and 15m where no sidewalk.
 - 25mm cal. from fire hydrants.
 - 30mm cal. from utility pedestals.
 - 15mm cal. from utility pedestals.
 - 15mm cal. from street superstructure.
 - SERVICE HDPE GEOMEMBRANE AROUND THEIR PERIMETER WHERE PROPOSED TREES ARE LOCATED LESS THAN THE REQUIRED MIN. HORIZONTAL DISTANCE FROM UNDERGROUND UTILITIES. All utilities shall not be permitted without written approval from the Consultant.



PLANT MATERIAL SCHEDULE

CODE	BOTANICAL NAME	COMMON NAME	QTY.	SIZE	REMARKS
DECIDUOUS TREES					
AE	ASCOSQUILLA GLABRA	OHIO BUCKEYE	1	60mm cal	B88, single-stem
AE	AGERXIA FREEMANII	AUTUMN BLAZE MAHLE	3	60mm cal	B88, single-stem
AFJ	AGRYIA CORONARIANA	BITTERLUCK HICKORY	1	60mm cal	B88, single-stem
CC	GELTIS OCCIDENTALIS	COMMON HACKBERRY	3	60mm cal	B88, single-stem
CO	QUERCUS PRINCEPIANA	PRINCEPIAN OAK	1	60mm cal	B88, single-stem
GT	GENTIANA TRIMACANTHOS	SKYLINE HONEYLOCUST	1	60mm cal	B88, single-stem
GT	SKYLINE	SKYLINE HONEYLOCUST	1	60mm cal	B88, single-stem
QM	QUERCUS MACROCARPA	BLUR OAK	2	60mm cal	B88, single-stem
QR	QUERCUS RUBRA	RED OAK	2	60mm cal	B88, single-stem



FOR APPROVAL ONLY

No.	Date	Revision
1.	JUNE 2026	ISSUE FOR APPROVAL

Name: _____ Stamp: _____

Contractor shall check and verify all dimensions on site and report all errors and/or omissions to the Consultant. Work to be done in accordance with all applicable codes and by-laws.

Do not scale Drawing.

This Drawing shall not be used for construction until signed by the Consultant.

Copyright reserved. This Drawing is the exclusive property of LEVSTEK CONSULTANTS. No part of this Drawing may be reproduced without the written consent of LEVSTEK CONSULTANTS.

Consultant:
LEVSTEK CONSULTANTS
LANDSCAPE ARCHITECTS
18871 HIGHWAY 7 EAST - ONTARIO - ONTARIO - M3A 3W6

Client:
COLEMAN CENTRAL SUBDIVISION
CARLETON PLACE, ONTARIO
PHASE 2 - BLOCK 29

Drawing Title:
LANDSCAPE PLAN

Drawn: **MBG**
Scale: **AS NOTED**

Design: **JUNE 2026**
Project No: **1210.03**

Drawing No: **L1.01**